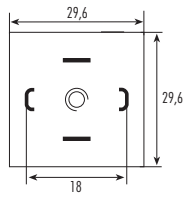


Valve plug

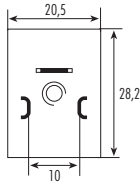
With open ended wires



Valve plug

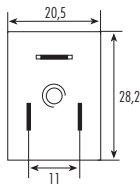
Form A (18 mm)

from 1.8.1



Valve plug

Form B (10 mm)

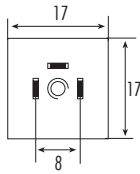


Valve plug

Form BI (11 mm)

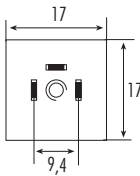
from 1.8.4

Valve plug



Valve plug

Form C (8 mm)



Valve plug

Form CI (9.4 mm)

from 1.8.8

Field-wireable



Valve plug

Form A (18 mm)

Form B (10 mm)

Form BI (11 mm)

from 1.8.12



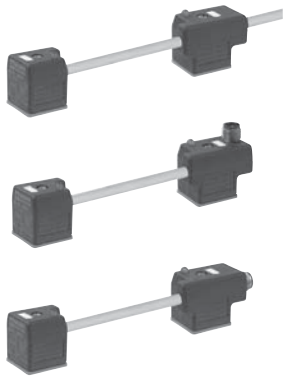
Valve plug

Isolation displacement technology

Form C (8 mm)

from 1.8.28

Connection cable



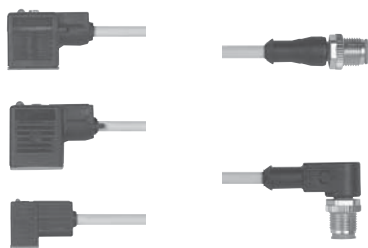
Double valve plug

Form	A	(18 mm)
	B	(10 mm)
	BI	(11 mm)

Double valve plug

Valve plug with connection cable
 Male M12 (Connector top entry)
 Male M12 (Connector at the rear)

from 1.8.29



Valve plug

Form	A	(18 mm)
	B	(10 mm)
	BI	(11 mm)
	C	(8 mm)
	CI	(9.4 mm)

Round plug connector

Male M12 straight
 90°

Valve plug

from 1.8.38



Adapter

Form	A	(18 mm)
	B	(10 mm)
	BI	(11 mm)

Adapter

Male M12 (Connector top entry)
 (Connector at the rear)

from 1.8.45

Valve plug

with open ended wires

Form A (18 mm)



Approvals:

1	Form	No.	1 8 0 0 1	1 8 0 2 1	1 8 0 4 1
	Suppression		24 V AC/DC with LED	24 V AC/DC with LED and suppression	110 V AC/DC with LED and suppression
	Circuit diagram				

	Contact layout				
--	----------------	--	--	--	--

2	Cable type	Jacket color			Jacket color			Jacket color		
	Wire diameter 0.75 mm ²	yellow	gray	black	yellow	gray	black	yellow	gray	black
	PVC	016	216	616	016	216	616	016	216	616
	PUR/PVC	026	226	626	026	226	626	026	226	626
	PUR (UL/CSA-listed)	036	236	636	036	236	636	036	236	636
	Suitable for robot cable (irradiated)	056	256	656	056	256	656	056	256	656

3	Cable length	
	1.5 m	0150
	3.0 m	0300
	5.0 m	0500
	7.5 m	0750
	10.0 m	1000

	Your article no.	<div style="display: flex; align-items: center; gap: 10px;"> <div style="border: 1px solid black; padding: 5px; text-align: center;">7 0 0 0</div> - <div style="border: 1px solid black; width: 60px; height: 30px; display: flex; align-items: center; justify-content: center;">- - - -</div> - <div style="border: 1px solid black; width: 60px; height: 30px; display: flex; align-items: center; justify-content: center;">- - - -</div> <div style="border: 1px solid black; width: 60px; height: 30px; display: flex; align-items: center; justify-content: center;">- - - -</div> </div>		
	The composition of your article number is explained on page 1.1.2	<div style="display: flex; align-items: center; gap: 10px;"> <div style="border: 1px solid black; padding: 5px; text-align: center;">Murrelektronik Standard</div> </div>		

		1 Form	2 Cable type	3 Cable length
--	--	---------------	---------------------	-----------------------

Notes	Accessories and technical data in chapter 1.10. Further cable lengths on request.
-------	---

Valve plug

with open ended wires

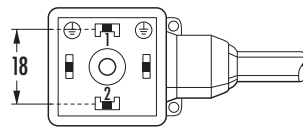
Form A (18 mm)



Approvals:

1	Form	No.	1 8 0 6 1	1 8 0 8 1
	Suppression		230 V AC/DC with LED and suppression	0...230 V AC/DC without electronics
	Circuit diagram			

Contact layout



2	Cable type	Jacket color			Jacket color		
	Wire diameter 0.75 mm ²	yellow	gray	black	yellow	gray	black
	PVC	016	216	616	016	216	616
	PUR/PVC	026	226	626	026	226	626
	PUR (UL/CSA-listed)	036	236	636	036	236	636
	Suitable for robot cable (irradiated)	056	256	656	056	256	656

3	Cable length	
	1.5 m	0150
	3.0 m	0300
	5.0 m	0500
	7.5 m	0750
	10.0 m	1000

Your article no.

The composition of your article number is explained on page 1.1.2



1 Form **2** Cable type **3** Cable length

Notes

Fitting conduits for adapter Art.-No. 906037 for Valve plug with M12 x 1 outer thread: Art.-No. 83161014 (gray) and Art.-No. 83161054 (black) from Murrplastik. Accessories and technical data in chapter 1.10. Further cable lengths on request.

Valve plug

with open ended wires
for pressure switches

Form A (18 mm)



Approvals:

Valve plug

1	Form	No.	1 8 1 2 1	1 8 1 4 1
	Suppression		24 V DC with LED red/green two color	24 V DC with LED yellow/green two color
	Circuit diagram			

	Contact layout			
--	----------------	--	--	--

2	Cable type	Jacket color			Jacket color		
	Wire diameter 0.75 mm ²	yellow	gray	black	yellow	gray	black
	PVC	018	218	618	018	218	618
	PUR/PVC	028	228	628	028	228	628
	PUR (UL/CSA-listed)	038	238	638	038	238	638
	Suitable for robot cable (irradiated)	058	258	658	058	258	658

3	Cable length	
	1.5 m	0150
	3.0 m	0300
	5.0 m	0500
	7.5 m	0750
	10.0 m	1000

	Your article no.	<div style="display: flex; align-items: center; gap: 10px;"> <div style="border: 1px solid black; padding: 5px; text-align: center;">7 0 0 0</div> - <div style="border: 1px solid black; width: 60px; height: 30px; display: flex; align-items: center; justify-content: center;">-</div> - <div style="border: 1px solid black; width: 60px; height: 30px; display: flex; align-items: center; justify-content: center;">-</div> </div>		
	The composition of your article number is explained on page 1.1.2	<div style="display: flex; align-items: center; gap: 10px;"> <div style="border: 1px solid black; padding: 5px; text-align: center;">Murrelektronik Standard</div> </div>		

		1 Form	2 Cable type	3 Cable length
--	--	---------------	---------------------	-----------------------

Notes	Accessories and technical data in chapter 1.10. Further cable lengths on request.
-------	--

Valve plug

with open ended wires

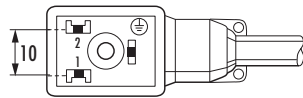
Form B (10 mm)



Valve plug

1	Form	No.	1 000 1	1 002 1	1 004 1
	Suppression		24 V AC/DC with LED	24 V AC/DC with LED and suppression	110 V AC/DC with LED and suppression
	Circuit diagram				

Contact layout



2	Cable type	Jacket color			Jacket color			Jacket color		
	Wire diameter 0.75 mm ²	yellow	gray	black	yellow	gray	black	yellow	gray	black
	PVC	016	216	616	016	216	616	016	216	616
	PUR/PVC	026	226	626	026	226	626	026	226	626
	PUR (UL/CSA-listed)	036	236	636	036	236	636	036	236	636
	Suitable for robot cable (irradiated)	056	256	656	056	256	656	056	256	656

3	Cable length	
	1.5 m	0150
	3.0 m	0300
	5.0 m	0500
	7.5 m	0750
	10.0 m	1000

Your article no.

The composition of your article number is explained on page 1.1.2

7 0 0 0 - **Murrelektronik Standard**

1 Form **2** Cable type **3** Cable length

Notes

Accessories and technical data in chapter 1.10.
Further cable lengths on request.

Valve plug

with open ended wires

Form B (10 mm)



1	Form	No.	10061	10081	
	Suppression		0...230 V AC/DC without electronics	24 V AC/DC with LED and suppression	
	Circuit diagram				
	Contact layout		0°, PE at cable entry 	180°, PE opposite cable entry 	
2	Cable type	Wire diameter 0.75 mm ²	Jacket color		
	PVC		yellow	gray	black
	PUR/PVC		016	216	616
	PUR (UL/CSA-listed)		026	226	626
	Suitable for robot cable (irradiated)		036	236	636
			056	256	656
3	Cable length				
	1.5 m		0150		
	3.0 m		0300		
	5.0 m		0500		
	7.5 m		0750		
	10.0 m		1000		
	Your article no.				
	The composition of your article number is explained on page 1.1.2	<div style="display: flex; align-items: center; gap: 10px;"> <div style="border: 1px solid black; padding: 5px; text-align: center;"> 7 0 0 0 Murrelektronik Standard </div> - <div style="border: 1px solid gray; width: 60px; height: 40px; background-color: #cccccc;"></div> - <div style="border: 1px solid gray; width: 60px; height: 40px; background-color: #cccccc;"></div> <div style="border: 1px solid gray; width: 60px; height: 40px; background-color: #cccccc;"></div> </div>			
		1	Form	2	Cable type
		3	Cable length		
Notes	Accessories and technical data in chapter 1.10. Further cable lengths on request.				

Valve plug

Valve plug

with open ended wires

Form BI (11 mm)
Industrial standard



Valve plug

1	Form	No.	1 1 0 0 1	1 1 0 2 1	1 1 0 4 1
	Suppression		24 V AC/DC with LED	24 V AC/DC with LED and suppression	110 V AC/DC with LED and suppression
	Circuit diagram				
	Contact layout				

2	Cable type	Jacket color			Jacket color			Jacket color		
	Wire diameter 0.75 mm ²	yellow	gray	black	yellow	gray	black	yellow	gray	black
	PVC	016	216	616	016	216	616	016	216	616
	PUR/PVC	026	226	626	026	226	626	026	226	626
	PUR (UL/CSA-listed)	036	236	636	036	236	636	036	236	636
	Suitable for robot cable (irradiated)	056	256	656	056	256	656	056	256	656

3	Cable length	
	1.5 m	0150
	3.0 m	0300
	5.0 m	0500
	7.5 m	0750
	10.0 m	1000

Your article no.	
<p>The composition of your article number is explained on page 1.1.2</p>	<p>Murrelektronik Standard</p>
	<p>1 Form 2 Cable type 3 Cable length</p>

Notes
Accessories and technical data in chapter 1.10. Further cable lengths on request.

Valve plug

with open ended wires

Form BI (11 mm)
Industrial standard



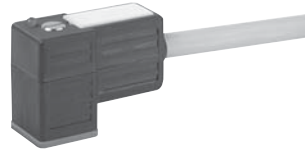
1	Form	No.	1 1 0 6 1	1 1 0 8 1				
	Suppression		0...230 V AC/DC without electronics	24 V AC/DC with LED and suppression				
	Circuit diagram							
	Contact layout		0°, PE at cable entry 	180°, PE opposite cable entry 				
2	Cable type		Jacket color					
	Wire diameter 0.75 mm ²		yellow	gray	black	yellow	gray	black
	PVC		016	216	616	016	216	616
	PUR/PVC		026	226	626	026	226	626
	PUR (UL/CSA-listed)		036	236	636	036	236	636
Suitable for robot cable (irradiated)		056	256	656	056	256	656	
3	Cable length							
	1.5 m		0150					
	3.0 m		0300					
	5.0 m		0500					
	7.5 m		0750					
	10.0 m		1000					
	Your article no.							
	The composition of your article number is explained on page 1.1.2		<div style="display: flex; align-items: center; gap: 10px;"> <div style="border: 1px solid black; padding: 5px; text-align: center;"> 7 0 0 0 Murrelektronik Standard </div> - <div style="border: 1px solid black; width: 100px; height: 30px; background-color: #ccc;"></div> - <div style="border: 1px solid black; width: 100px; height: 30px; background-color: #ccc;"></div> - <div style="border: 1px solid black; width: 100px; height: 30px; background-color: #ccc;"></div> </div>					
			1	Form	2	Cable type	3	Cable length
	Notes		Accessories and technical data in chapter 1.10. Further cable lengths on request.					

Valve plug

Valve plug

with open ended wires

Form C (8 mm)



Approvals:

Valve plug

1	Form	No.	80001	80021
	Suppression		24 V AC/DC with LED	24 V AC/DC with LED and suppression
	Circuit diagram			
	Contact layout			

2	Cable type	Jacket color			Jacket color		
	Wire diameter 0.75 mm ²	yellow	gray	black	yellow	gray	black
	PVC	016	216	616	016	216	616
	PUR/PVC	026	226	626	026	226	626
	PUR (UL/CSA-listed)	036	236	636	036	236	636
	Suitable for robot cable (irradiated)	056	256	656	056	256	656

3	Cable length	
	1.5 m	0150
	3.0 m	0300
	5.0 m	0500
	7.5 m	0750
	10.0 m	1000

Your article no.			
The composition of your article number is explained on page 1.1.2			
	Murrelektronik Standard		

	1 Form	2 Cable type	3 Cable length
--	---------------	---------------------	-----------------------

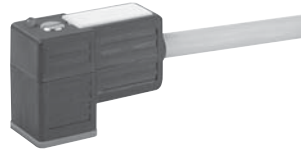
Notes
 Accessories and technical data in chapter 1.10.
 Further cable lengths on request.

Valve plug

with open ended wires

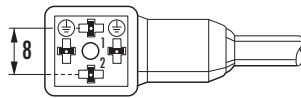
Form C (8 mm)

Approvals:



1 Form	No.	8004 1	8006 1
Suppression		110 V AC/DC with LED and suppression	0...230 V AC/DC without electronics
Circuit diagram			

Contact layout



2 Cable type	Jacket color			Jacket color		
	yellow	gray	black	yellow	gray	black
Wire diameter 0.75 mm ²						
PVC	016	216	616	016	216	616
PUR/PVC	026	226	626	026	226	626
PUR (UL/CSA-listed)	036	236	636	036	236	636
Suitable for robot cable (irradiated)	056	256	656	056	256	656

3 Cable length	
1.5 m	0150
3.0 m	0300
5.0 m	0500
7.5 m	0750
10.0 m	1000

Your article no.

The composition of your article number is explained on page 1.1.2

7 0 0 0 - -

Murrelektronik Standard

1 Form **2** Cable type **3** Cable length

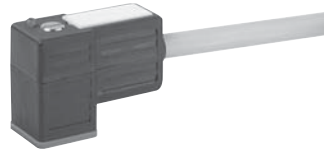
Notes

Accessories and technical data in chapter 1.10.
Further cable lengths on request.

Valve plug

with open ended wires

Form CI (9.4 mm)
Industrial standard



Approvals:

Valve plug

1	Form	No.	94001	94021
	Suppression		24 V AC/DC with LED	24 V AC/DC with LED and suppression
	Circuit diagram			
	Contact layout			

2	Cable type	Jacket color			Jacket color		
	Wire diameter 0.75 mm ²	yellow	gray	black	yellow	gray	black
	PVC	016	216	616	016	216	616
	PUR/PVC	026	226	626	026	226	626
	PUR (UL/CSA-listed)	036	236	636	036	236	636
	Suitable for robot cable (irradiated)	056	256	656	056	256	656

3	Cable length	
	1.5 m	0150
	3.0 m	0300
	5.0 m	0500
	7.5 m	0750
	10.0 m	1000

Your article no.	7 0 0 0 - - - - - - - - - -		
The composition of your article number is explained on page 1.1.2	Murrelektronik Standard		

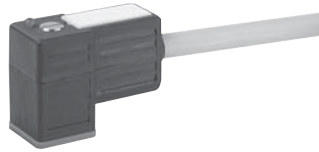
	1 Form	2 Cable type	3 Cable length
--	--------	--------------	----------------

Notes
Accessories and technical data in chapter 1.10.
Further cable lengths on request.

Valve plug

with open ended wires

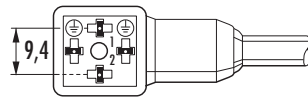
Form CI (9.4 mm)
Industrial standard



Approvals:

1	Form	No.	94041	94061
	Suppression		110 V AC/DC with LED and suppression	0...230 V AC/DC without electronics
	Circuit diagram			

Contact layout



2	Cable type	Jacket color			Jacket color		
	Wire diameter 0.75 mm ²	yellow	gray	black	yellow	gray	black
	PVC	016	216	616	016	216	616
	PUR/PVC	026	226	626	026	226	626
	PUR (UL/CSA-listed)	036	236	636	036	236	636
	Suitable for robot cable (irradiated)	056	256	656	056	256	656

3	Cable length	
	1.5 m	0150
	3.0 m	0300
	5.0 m	0500
	7.5 m	0750
	10.0 m	1000

Your article no.

The composition of your article number is explained on page 1.1.2

7 0 0 0 - -

Murrelektronik Standard

1 Form **2** Cable type **3** Cable length

Notes

Accessories and technical data in chapter 1.10.
Further cable lengths on request.

Valve plug

Field-wireable
with screw terminals

Form A (18 mm)



Valve plug

1	Form	No.	29001	29021	29041	29061
Suppression			24 V AC/DC LED and Z-Diode	24 V AC/DC LED and Z-Diode	24 V AC/DC LED and RC	24 V AC/DC LED and RC
Circuit diagram			metric	PG 9	metric	PG 9
Contact layout						
Technical data						
24 V AC/DC		LED + Z-Diode	LED: yellow (appr. 12 mA),	Suppression: Z-Diodes,	Switch off spike: ≤ 55V,	Delay: ≤ 20 ms, Hold on: ≤ 100W (VA)
		LED + RC	LED: yellow (appr. 12 mA),	Suppression: RC-network,	Switch off spike: ≤ 100V,	Delay: ≤ 10 ms, Hold on: ≤ 50W (VA)
Compression gland		PG 9; (PG 11 and NPT 1/2" at Form A on request); M16 x 1.5 mm to DIN EN 50262				
Clamping range/ outer-Ø		PG 9-Compression gland/6...8 mm; M16 x 1.5 mm/5...10 mm				
Terminals		single core 4 mm ² , stranded 2.5 mm ² , with ferrules 1.5 mm ²				
Plug color		black housing, transparent flip-top				
Protection		IP65 when plugged and screwed down (EN 60529), with gland				
Temperature range		-20...+60 °C				
Your article no.						
The composition of your article number is explained on page 1.1.2		<div style="display: flex; justify-content: space-around; align-items: center;"> <div style="border: 1px solid black; padding: 5px; background-color: #cccccc;">7 0 0 0</div> - <div style="border: 1px solid black; padding: 5px; background-color: #cccccc;">_ _ _ _</div> - <div style="border: 1px solid black; padding: 5px; background-color: #cccccc;">0 0 0</div> <div style="border: 1px solid black; padding: 5px; background-color: #cccccc;">0 0 0 0</div> </div>				
		<div style="display: flex; justify-content: center; align-items: center;"> <div style="border: 1px solid black; padding: 5px; background-color: #cccccc; margin-right: 10px;">Murrelektronik Standard</div> <div style="background-color: #4CAF50; color: white; padding: 5px; margin-right: 10px;">1</div> <div style="background-color: #4CAF50; color: white; padding: 5px;">Form</div> </div>				
Notes						
Accessories and technical data in chapter 1.10.						

Valve plug

Field-wireable
with screw terminals

Form A (18 mm)



1	Form	No.	29081	29101	29121	29141
	Suppression		110 V AC/DC LED and VDR	110 V AC/DC LED and VDR	110 V AC/DC LED and RC	110 V AC/DC LED and RC
	Circuit diagram		metric	PG 9	metric (for 110 V and 230 V AC/DC)	PG 9
	Contact layout					
Technical data						
	110 V AC/DC	LED + VDR	LED: yellow (appr. 12 mA),	Suppression: Varistor,	Switch off spike: ≤ 250 V,	Delay: ≤ 10 ms, Hold on: ≤ 100 W (VA)
		LED + RC	LED: yellow (appr. 12 mA),	Suppression: RC-network,	Switch off spike: ≤ 400 V,	Delay: ≤ 10 ms, Hold on: ≤ 50 W (VA)
	Compression gland		PG 9; (PG 11 and NPT 1/2" at Form A on request); M16 x 1.5 mm to DIN EN 50262			
	Clamping range/ outer-Ø		PG 9-Compression gland/6...8 mm; M16 x 1.5 mm/5...10 mm			
	Terminals		single core 4 mm ² , stranded 2.5 mm ² , with ferrules 1.5 mm ²			
	Plug color		black housing, transparent flip-top			
	Protection		IP65 when plugged and screwed down (EN 60529), with gland			
	Temperature range		-20...+60 °C			
Your article no.						
	The composition of your article number is explained on page 1.1.2		7 0 0 0	-	0 0 0	0 0 0 0
			Murrelektronik Standard			
			1 Form			
Notes						
			Accessories and technical data in chapter 1.10.			

Valve plug

Valve plug

Field-wireable
with screw terminals

Form A (18 mm)



Valve plug

1	Form	No.	29161	29181	29121	29141
	Suppression		230 V AC/DC LED and VDR	230 V AC/DC LED and VDR	230 V AC/DC LED and RC	230 V AC/DC LED and RC
	Circuit diagram		metric	PG 9	metric (for 110 V and 230 V AC/DC)	PG 9
	Contact layout					
Technical data						
	230 V AC/DC	LED + VDR	LED: yellow (appr. 12 mA),	Suppression: Varistor,	Switch off spike: ≤ 450 V,	Delay: ≤ 15 ms, Hold on: ≤ 100 W (VA)
		LED + RC	LED: yellow (appr. 12 mA),	Suppression: RC-network,	Switch off spike: ≤ 450 V,	Delay: ≤ 15 ms, Hold on: ≤ 50 W (VA)
	Compression gland		PG 9; (PG 11 and NPT 1/2" at Form A on request); M16 x 1.5 mm to DIN EN 50262			
	Clamping range/ outer-Ø		PG 9-gland/6...8 mm; M16 x 1.5 mm/5...10 mm			
	Terminals		single core 4 mm ² , stranded 2.5 mm ² , with ferrules 1.5 mm ²			
	Plug color		black housing, transparent flip-top			
	Protection		IP65 when plugged and screwed down (EN 60529), with compression gland			
	Temperature range		-20...+60 °C			
Your article no.						
	The composition of your article number is explained on page 1.1.2		7 0 0 0 - - 0 0 0 			
			Murrelektronik Standard			
			1			
Notes						
			Accessories and technical data in chapter 1.10.			

Valve plug

Field-wireable
with screw terminals

Form A (18 mm)



1	Form	No.	29241	29261	
	Suppression		230 V AC/DC without electronics	230 V AC/DC without electronics	
	Circuit diagram		metric	PG 9	
	Contact layout				
Technical data					
	0...230 V AC/DC without electronics		Hold on: ≤ 920 W (VA), max. switched current 10 A		
	Compression gland		PG 9; (PG 11 and NPT 1/2" at Form A on request); M16 x 1,5 mm to DIN EN 50262		
	Clamping range/ outer-Ø		PG 9-gland/6...8 mm; M16 x 1.5 mm/5...10 mm		
	Terminals		single core 4 mm ² , stranded 2.5 mm ² , with ferrules 1.5 mm ²		
	Plug color		black housing, transparent flip-top		
	Protection		IP65 when plugged and screwed down (EN 60529), with compression gland		
	Temperature range		-20...+60 °C		
Your article no.					
	The composition of your article number is explained on page 1.1.2		7 0 0 0 - --- - 0 0 0 0 0 0 0		
			Murrelektronik Standard		
1 Form					
Notes					
	Accessories and technical data in chapter 1.10.				

Valve plug

Field-wireable
with screw terminals
for pressure switches

Form A (18 mm)



Valve plug

1	Form	No.	29281	29301	29321	29341
		Suppression	24...230 V AC/DC metric	24...230 V AC/DC PG 9	24...230 V AC/DC metric	24...230 V AC/DC PG 9
		Circuit diagram				
		Contact layout				
Technical data						
		Current voltage	≤ 40 mA at 24 V, ≤ 3 mA at 110 V, ≤ 6 mA at 230 V			
		Switching current/supply current	≤ 4 A			
		Compression gland	PG 9; (PG 11 and NPT 1/2" at Form A on request); M16 x 1.5 mm to DIN EN 50262			
		Clamping range/ outer-Ø	PG 9-gland/6...8 mm; M16 x 1.5 mm/5...10 mm			
		Terminals	single core 4 mm ² , stranded 2.5 mm ² , with ferrules 1.5 mm ²			
		Plug color	black housing, transparent flip-top			
		Protection	IP65 when plugged and screwed down (EN 60529), with compression gland			
		Temperature range	-20...+60 °C			
Your article no.						
		The composition of your article number is explained on page 1.1.2	<div style="display: flex; align-items: center; justify-content: center; gap: 10px;"> <div style="border: 1px solid black; padding: 5px; text-align: center;">7 0 0 0</div> - <div style="border: 1px solid black; padding: 5px; text-align: center;">- - - - -</div> - <div style="border: 1px solid black; padding: 5px; text-align: center;">0 0 0</div> <div style="border: 1px solid black; padding: 5px; text-align: center;">0 0 0 0</div> </div> <p style="margin-top: 5px;">Murrelektronik Standard</p>			
			1 Form			
Notes						
			Accessories and technical data in chapter 1.10.			

Valve plug

Field-wireable
with screw terminals
for pressure switches

Form A (18 mm)



1	Form	No.	29361	29381	29401	29421
	Suppression		24...230 V AC/DC metric	24...230 V AC/DC PG 9	24...230 V AC/DC metric	24...230 V AC/DC PG 9
	Circuit diagram					
	Contact layout					
	Technical data					
	Current voltage		≤ 40 mA at 24 V, ≤ 3 mA at 110 V, ≤ 6 mA at 230 V			
	Switching current/supply current		≤ 4 A			
	Compression gland		PG 9; (PG 11 and NPT 1/2" at Form A on request); M16 x 1.5 mm to DIN EN 50262			
	Clamping range/ outer-Ø		PG 9-gland/6...8 mm; M16 x 1.5 mm/5...10 mm			
	Terminals		single core 4 mm ² , stranded 2.5 mm ² , with ferrules 1.5 mm ²			
	Plug color		black housing, transparent flip-top			
	Protection		IP65 when plugged and screwed down (EN 60529), with compression gland			
	Temperature range		-20...+60 °C			
	Your article no.					
	The composition of your article number is explained on page 1.1.2		7 0 0 0 - - 0 0 0			
			1 Form			
	Notes		Accessories and technical data in chapter 1.10.			

Valve plug

Valve plug

Field-wireable
with screw terminals
for pressure switches

Form A (18 mm)



Valve plug

1	Form	No.	29441	29461
	Suppression		24 V AC/DC metric	24 V AC/DC PG 9
	Circuit diagram			
	Contact layout			
Technical data				
	Current voltage	≤ 20 mA		
	Switching current/supply current	≤ 4 A		
	Compression gland	PG 9; (PG 11 and NPT 1/2" at Form A on request); M16 x 1.5 mm to DIN EN 50262		
	Clamping range/ outer-Ø	PG 9-gland/6...8 mm; M16 x 1.5 mm/5...10 mm		
	Terminals	single core 4 mm ² , stranded 2.5 mm ² , with ferrules 1.5 mm ²		
	Plug color	black housing, transparent flip-top		
	Protection	IP65 when plugged and screwed down (EN 60529), with compression gland		
	Temperature range	-20...+60 °C		
Your article no.				
	The composition of your article number is explained on page 1.1.2	<div style="display: flex; align-items: center; justify-content: space-around;"> <div style="border: 1px solid black; padding: 5px; text-align: center;">7 0 0 0</div> - <div style="border: 1px solid black; padding: 5px; text-align: center;">- - - - -</div> - <div style="border: 1px solid black; padding: 5px; text-align: center;">0 0 0</div> <div style="border: 1px solid black; padding: 5px; text-align: center;">0 0 0 0</div> </div> <p style="margin-top: 5px;">Murrelektronik Standard</p>		
		1 Form		
Notes				
Accessories and technical data in chapter 1.10.				

Valve plug

Field-wireable
with screw terminals

Form A (18 mm)



1	Form	No.	29481	29501	29521	29541
	Suppression		24 V DC with switching amplifier	24 V DC with switching amplifier	24...230 V AC/DC with bridge rectifier	24...230 V AC/DC with bridge rectifier
	Circuit diagram		metric	PG 9	metric	PG 9
	Contact layout		<p>Contact 3 not used</p>		<p>Contact 3 not used</p>	
	Technical data					
	Current voltage		≤ 3 mA (control current)			≤ 20 mA (LED)
	Switching current/supply current		≤ 2 A (short-circuit protected)			≤ 1.5 A
	Hold on valve		≤ 60 W			≤ 345 W (VA)
	Control voltage		ON: 12...42 V DC; OFF: ≤ 8 V DC (IN)			–
	Switching frequency		≤ 400 Hz			–
	Switch off spike		≤ 1 V			≤ 3 V
	Compression gland		PG 9; (PG 11 and NPT 1/2" at Form A on request); M16 x 1.5 mm to DIN EN 50262			
	Clamping range/ outer-Ø		PG 9-gland/6...8 mm; M16 x 1.5 mm/5...10 mm			
	Terminals		single core 4 mm ² , stranded 2.5 mm ² , with ferrules 1.5 mm ²			
	Plug color		black housing, transparent flip-top			
	Protection		IP65 when plugged and screwed down (EN 60529), with compression gland			
	Temperature range		-20...+60 °C			
	Your article no.					
	The composition of your article number is explained on page 1.1.2		7 0 0 0 – – 0 0 0 0 0 0 0			
			1 Form			
	Notes		Accessories and technical data in chapter 1.10.			

Valve plug

Valve plug

Field-wireable
with screw terminals

Form B (10 mm)



Valve plug

1	Form	No.	29561	29581	29601	29621
	Suppression		24 V AC/DC LED and Z-Diode	24 V AC/DC LED and Z-Diode	24 V AC/DC LED and RC	24 V AC/DC LED and RC
	Circuit diagram		metric	PG 9	metric	PG 9
	Contact layout					
Technical data						
24 V AC/DC	LED + Z-Diode	LED: yellow (appr. 12 mA),	Suppression: Z-Diodes,	Switch off spike: ≤ 55V,	Delay: ≤ 20 ms,	Hold on: ≤ 100W (VA)
	LED + RC	LED: yellow (appr. 12 mA),	Suppression: RC-network,	Switch off spike: ≤ 100V,	Delay: ≤ 10 ms,	Hold on: ≤ 50W (VA)
Compression gland		PG 9; (PG 11 and NPT 1/2" at Form A on request); M16 x 1.5 mm to DIN EN 50262				
Clamping range/ outer-Ø		PG 9-gland/6...8 mm; M16 x 1.5 mm/5...10 mm				
Terminals		single core 4 mm ² , stranded 2.5 mm ² , with ferrules 1.5 mm ²				
Plug color		black housing, transparent flip-top				
Protection		IP65 when plugged and screwed down (EN 60529), with compression gland				
Temperature range		-20...+60 °C				
Your article no.						
The composition of your article number is explained on page 1.1.2	7 0 0 0		-	- - - - -		-
	Murrelektronik Standard					0 0 0
						0 0 0 0
	1 Form					
Notes	Accessories and technical data in chapter 1.10.					

Valve plug

Field-wireable
with screw terminals

Form B (10 mm)



1	Form	No.	29641	29661	
	Suppression		110 V AC/DC LED and VDR	110 V AC/DC LED and VDR	
	Circuit diagram		metric	PG 9	
	Contact layout				
Technical data					
110 V AC/DC	LED + VDR	LED: yellow (appr. 12 mA),	Suppression: Varistor,	Switch off spike: ≤ 250 V,	Delay: ≤ 10 ms, Hold on: ≤ 100 W (VA)
	LED + RC	LED: yellow (appr. 12 mA),	Suppression: RC-network,	Switch off spike: ≤ 400 V,	Delay: ≤ 10 ms, Hold on: ≤ 50 W (VA)
Compression gland		PG 9; (PG 11 and NPT 1/2" at Form A on request); M16 x 1.5 mm to DIN EN 50262			
Clamping range/ outer-Ø		PG 9-gland/6...8 mm; M16 x 1.5 mm/5...10 mm			
Terminals		single core 4 mm ² , stranded 2.5 mm ² , with ferrules 1.5 mm ²			
Plug color		black housing, transparent flip-top			
Protection		IP65 when plugged and screwed down (EN 60529), with compression gland			
Temperature range		-20...+60 °C			
Your article no.					
The composition of your article number is explained on page 1.1.2	7 0 0 0 - --- - 0 0 0 0 0 0 0				
	Murrelektronik Standard				
	1 Form				
Notes	Accessories and technical data in chapter 1.10.				

Valve plug

Field-wireable
with screw terminals

Form B (10 mm)



Valve plug

1	Form	No.	29681	29701	29721	29741
	Suppression		230 V AC/DC LED and VDR	230 V AC/DC LED and VDR	230 V AC/DC LED and RC	230 V AC/DC LED and RC
	Circuit diagram		metric	PG 9	metric	PG 9
	Contact layout					
Technical data						
	230 V AC/DC	LED + VDR	LED: yellow (appr. 12 mA),	Suppression: Varistor,	Switch off spike: ≤ 450 V,	Delay: ≤ 15 ms, Hold on: ≤ 100W (VA)
		LED + RC	LED: yellow (appr. 12 mA),	Suppression: RC-network,	Switch off spike: ≤ 450 V,	Delay: ≤ 15 ms, Hold on: ≤ 50 W (VA)
	Compression gland		PG 9; (PG 11 and NPT 1/2" at Form A on request); M16 x 1.5 mm to DIN EN 50262			
	Clamping range/ outer-Ø		PG 9-gland/6...8 mm; M16 x 1.5 mm/5...10 mm			
	Terminals		single core 4 mm ² , stranded 2.5 mm ² , with ferrules 1.5 mm ²			
	Plug color		black housing, transparent flip-top			
	Protection		IP65 when plugged and screwed down (EN 60529), with compression gland			
	Temperature range		-20...+60 °C			
Your article no.						
	The composition of your article number is explained on page 1.1.2		7 0 0 0	-	-	0 0 0 0
			Murrelektronik Standard			
			1 Form			
Notes						
			Accessories and technical data in chapter 1.10.			

Valve plug

Field-wireable
with screw terminals

Form B (10 mm)



1	Form	No.	29761	29781	
	Suppression		230 V AC/DC without electronics	230 V AC/DC without electronics	
	Circuit diagram		metric	PG 9	
	Contact layout				
Technical data					
	Supply voltage		230 V AC/DC		
	Max. hold on current		10 A		
	Compression gland		PG 9; (PG 11 and NPT 1/2" at Form A on request); M16 x 1.5 mm to DIN EN 50262		
	Clamping range/ outer-Ø		PG 9-gland/6...8 mm; M16 x 1.5 mm/5...10 mm		
	Terminals		single core 4 mm ² , stranded 2.5 mm ² , with ferrules 1.5 mm ²		
	Plug color		black housing, transparent flip-top		
	Protection		IP65 when plugged and screwed down (EN 60529), with compression gland		
	Temperature range		-20...+60 °C		
Your article no.					
	The composition of your article number is explained on page 1.1.2		<div style="border: 1px solid black; padding: 2px; display: inline-block;">7 0 0 0</div> - <div style="border: 1px solid black; padding: 2px; display: inline-block;">- - - - -</div> - <div style="border: 1px solid black; padding: 2px; display: inline-block;">0 0 0</div> <div style="border: 1px solid black; padding: 2px; display: inline-block; margin-left: 20px;">0 0 0 0</div>		
			1 Form		
Notes					
			Accessories and technical data in chapter 1.10.		

Valve plug

Field-wireable
with screw terminals

Form B (11 mm)
Industrial standard



Valve plug

1	Form	No.	29801	29821	29841	29861
	Suppression		24 V AC/DC LED and Z-Diode	24 V AC/DC LED and Z-Diode	24 V AC/DC LED and RC	24 V AC/DC LED and RC
	Circuit diagram		metric	PG 9	metric	PG 9
	Contact layout					
Technical data						
	24 V AC/DC	LED + Z-Diode	LED: yellow (appr. 12 mA),	Suppression: Z-Diodes,	Switch off spike: ≤ 55V,	Delay: ≤ 20 ms, Hold on: ≤ 100 W (VA)
		LED + RC	LED: yellow (appr. 12 mA),	Suppression: RC-network,	Switch off spike: ≤ 100V,	Delay: ≤ 10 ms, Hold on: ≤ 50 W (VA)
	Compression gland		PG 9; (PG 11 and NPT 1/2" at Form A on request); M16 x 1.5 mm to DIN EN 50262			
	Clamping range/ outer-Ø		PG 9-Compression gland/6...8 mm; M16 x 1.5 mm/5...10 mm			
	Terminals		single core 4 mm ² , stranded 2.5 mm ² , with ferrules 1.5 mm ²			
	Plug color		black housing, transparent flip-top			
	Protection		IP65 when plugged and screwed down (EN 60529), with compression gland			
	Temperature range		-20...+60 °C			
Your article no.						
	The composition of your article number is explained on page 1.1.2		7 0 0 0	-	-	0 0 0 0
			Murrelektronik Standard			0 0 0 0
			1 Form			
Notes						
			Accessories and technical data in chapter 1.10.			

Field-wireable
with screw terminals

Form B (11 mm)
Industrial standard



1	Form	No.	29881	29901	
	Suppression		110 V AC/DC LED and VDR	110 V AC/DC LED and VDR	
	Circuit diagram		metric	PG 9	
	Contact layout				
Technical data					
110 V AC/DC	LED + VDR	LED: yellow (appr. 12 mA),	Suppression: Varistor,	Switch off spike: ≤ 250 V,	Delay: ≤ 10 ms, Hold on: ≤ 100 W (VA)
	LED + RC	LED: yellow (appr. 12 mA),	Suppression: RC-network,	Switch off spike: ≤ 400 V,	Delay: ≤ 10 ms, Hold on: ≤ 50 W (VA)
Compression gland		PG 9; (PG 11 and NPT 1/2" at Form A on request); M16 x 1.5 mm to DIN EN 50262			
Clamping range/ outer-Ø		PG 9-gland/6...8 mm; M16 x 1.5 mm/5...10 mm			
Terminals		single core 4 mm ² , stranded 2.5 mm ² , with ferrules 1.5 mm ²			
Plug color		black housing, transparent flip-top			
Protection		IP65 when plugged and screwed down (EN 60529), with compression gland			
Temperature range		-20...+60 °C			
Your article no.					
The composition of your article number is explained on page 1.1.2	7 0 0 0 - --- - 0 0 0 0 0 0 0				
	Murrelektronik Standard				
1 Form					
Notes	Accessories and technical data in chapter 1.10.				

Valve plug

Field-wireable
with screw terminals

Form B (11 mm)
Industrial standard



Valve plug

1	Form	No.	29921	29941	29961	29981		
	Suppression		230 V AC/DC LED and VDR	230 V AC/DC LED and VDR	230 V AC/DC LED and RC	230 V AC/DC LED and RC		
	Circuit diagram		metric	PG 9	metric	PG 9		
	Contact layout							
	Technical data							
	230 V AC/DC	LED + VDR	LED: yellow (appr. 12 mA),	Suppression: Varistor,	Switch off spike: ≤ 450 V,	Delay: ≤ 15 ms,	Hold on: ≤ 100 W (VA)	
		LED + RC	LED: yellow (appr. 12 mA),	Suppression: RC-network,	Switch off spike: ≤ 450 V,	Delay: ≤ 15 ms,	Hold on: ≤ 50 W (VA)	
	Compression gland		PG 9; (PG 11 and NPT 1/2" at Form A on request); M16 x 1.5 mm to DIN EN 50262					
	Clamping range/ outer-Ø		PG 9-gland/6...8 mm; M16 x 1.5 mm/5...10 mm					
	Terminals		single core 4 mm ² , stranded 2.5 mm ² , with ferrules 1.5 mm ²					
	Plug color		black housing, transparent flip-top					
	Protection		IP65 when plugged and screwed down (EN 60529), with compression gland					
	Temperature range		-20...+60 °C					
	Your article no.							
	The composition of your article number is explained on page 1.1.2		7 0 0 0	-	-	-	0 0 0	0 0 0 0
			Murrelektronik Standard					
			1 Form					
	Notes		Accessories and technical data in chapter 1.10.					

Valve plug

Field-wireable
with screw terminals

Form B (11 mm)
Industrial standard



1	Form	No.	30001	30021	
	Suppression		230 V AC/DC without electronics	230 V AC/DC without electronics	
	Circuit diagram		metric	PG 9	
	Contact layout				
	Technical data				
	Supply voltage		230 V AC/DC		
	Max. hold on current		10 A		
	Compression gland		PG 9; (PG 11 and NPT 1/2" at Form A on request); M16 x 1.5 mm to DIN EN 50262		
	Clamping range/ outer-Ø		PG 9-gland/6...8 mm; M16 x 1.5 mm/5...10 mm		
	Terminals		single core 4 mm ² , stranded 2.5 mm ² , with ferrules 1.5 mm ²		
	Plug color		black housing, transparent flip-top		
	Protection		IP65 when plugged and screwed down (EN 60529), with compression gland		
	Temperature range		-20...+60 °C		
	Your article no.				
	The composition of your article number is explained on page 1.1.2		7 0 0 0 - — — — — — - 0 0 0		0 0 0 0
			Murrelektronik Standard		
			1 Form		
	Notes				
			Accessories and technical data in chapter 1.10.		

Valve plug

Valve plug

Field-wireable

with isolation displacement technology

Form C (8 mm)



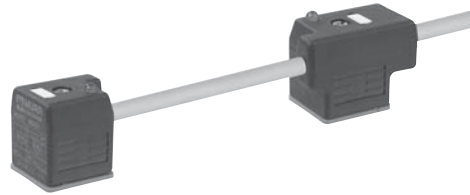
Valve plug

1	Form	No.	80101	80081
	Suppression		0...230 V AC/DC without electronics	24 V AC/DC with suppression
	Circuit diagram		<p>The cable outlet can be turned in 3 x 90° steps</p>	<p>The cable outlet can be turned in 3 x 90° steps</p>
	Contact layout			
	Technical data			
	Supply voltage	0...250 V AC/300 V DC or 24 V AC/DC with suppression		
	Current per contact	max. 3 A		
	Connection diameter	0.25...0.5 mm ² (conductor diameter ≥ 0.1 mm)		
	Outer wire diameter	1.2...1.6 mm		
	Outer cable diameter	4.0...6.0 mm		
	Connection frequency	10 x (on the same position)		
	Protection	IP67 when plugged and screwed down (EN 60529)		
	Temperature range	-25...+90 °C		
	Dimensions H x W x D/thread	28 x 16 x 16 mm/M14 x 1		
	Total length, assembled	44.5 mm		
	Your article no.			
	The composition of your article number is explained on page 1.1.2	<div style="display: flex; justify-content: space-around; align-items: center;"> <div style="border: 1px solid black; padding: 5px; text-align: center;"> 7 0 0 0 Murrelektronik Standard </div> <div style="font-size: 2em;">-</div> <div style="border: 1px solid black; padding: 5px; text-align: center;"> _ _ _ _ </div> <div style="font-size: 2em;">-</div> <div style="border: 1px solid black; padding: 5px; text-align: center;"> 0 0 0 </div> <div style="border: 1px solid black; padding: 5px; text-align: center;"> 0 0 0 0 </div> </div>		
		1 Form		
	Notes			
	Accessories and technical data in chapter 1.10. Further cable lengths on request.			

Valve plug

Double valve plug
with pre-wired cable

Form A (18 mm)



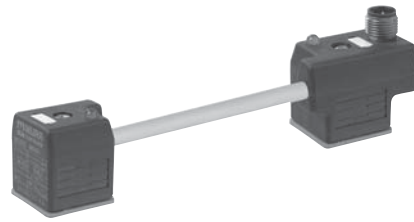
1	Form	No.	58001	58021	58041					
	Suppression	4-pole, 24 V AC/DC Version L = 100 mm		4-pole, 24 V AC/DC Version L = 150 mm	4-pole, 24 V AC/DC Version L = 200 mm					
1	Circuit diagram									
	Contact layout	<p>Jacket color for pre-wired cable = Jacket color for connection cable</p>								
2	Cable type	Jacket color			Jacket color			Jacket color		
	Wire diameter 0.75 mm²	yellow	gray	black	yellow	gray	black	yellow	gray	black
	PVC	017	217	617	017	217	617	017	217	617
	PUR/PVC	027	227	627	027	227	627	027	227	627
	PUR (UL/CSA-listed)	037	237	637	037	237	637	037	237	637
3	Cable length									
	1.5 m	0150								
	3.0 m	0300								
	5.0 m	0500								
	7.5 m	0750								
	10.0 m	1000								
Your article no.										
The composition of your article number is explained on page 1.1.2										
		1 Form			2 Cable type			3 Cable length		
Notes		Accessories and technical data in chapter 1.10. Further cable lengths on request.								

Valve plug

Valve plug

Double valve plug
with Male M12
Connector top entry

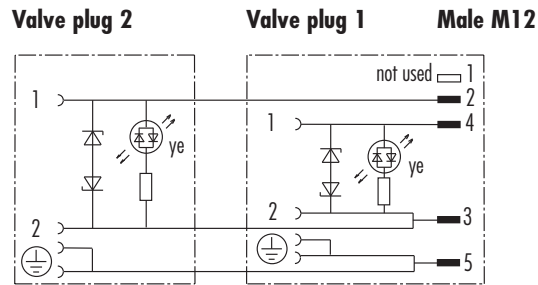
Form A (18 mm)



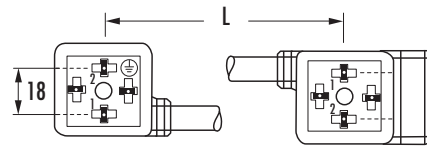
Valve plug

1	Form	No.	4 1 5 0 1	4 1 5 2 1	4 1 5 4 1
	Suppression		4-pole, 24 V AC/DC L = 100 mm	4-pole, 24 V AC/DC L = 150 mm	4-pole, 24 V AC/DC L = 200 mm

Circuit diagram



Contact layout



2	Cable type	Jacket color			Jacket color			Jacket color		
	Wire diameter 0.75 mm ²	yellow	gray	black	yellow	gray	black	yellow	gray	black
	PVC	016	216	616	016	216	616	016	216	616
	PUR/PVC	026	226	626	026	226	626	026	226	626
	PUR (UL/CSA-listed)	036	236	636	036	236	636	036	236	636

Your article no.

The composition
of your article number
is explained
on page 1.1.2



1 Form

2 Cable type

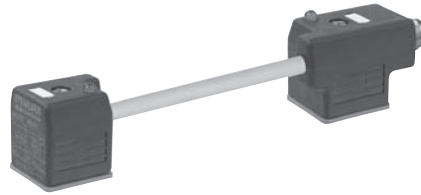
Notes

Accessories and technical data in chapter 1.10.
Further cable lengths on request.

Valve plug

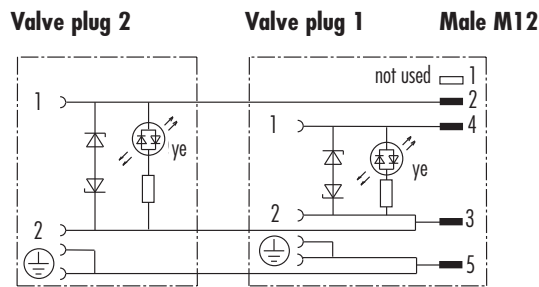
Double valve plug
with Male M12
Connector at the rear

Form A (18 mm)

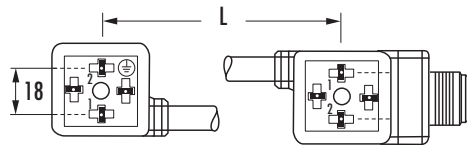


1	Form	No.	4 1 5 6 1	4 1 5 8 1	4 1 6 0 1
	Suppression		4-pole, 24 V AC/DC L = 100 mm	4-pole, 24 V AC/DC L = 150 mm	4-pole, 24 V AC/DC L = 200 mm

Circuit diagram



Contact layout



2	Cable type	Jacket color			Jacket color			Jacket color		
	Wire diameter 0.75 mm ²	yellow	gray	black	yellow	gray	black	yellow	gray	black
	PVC	016	216	616	016	216	616	016	216	616
	PUR/PVC	026	226	626	026	226	626	026	226	626
	PUR (UL/CSA-listed)	036	236	636	036	236	636	036	236	636

Your article no.

The composition
of your article number
is explained
on page 1.1.2

7 0 0 0 - **Murrelektronik Standard**

1 Form

2 Cable type

Notes

Accessories and technical data in chapter 1.10.
Further cable lengths on request.

Valve plug

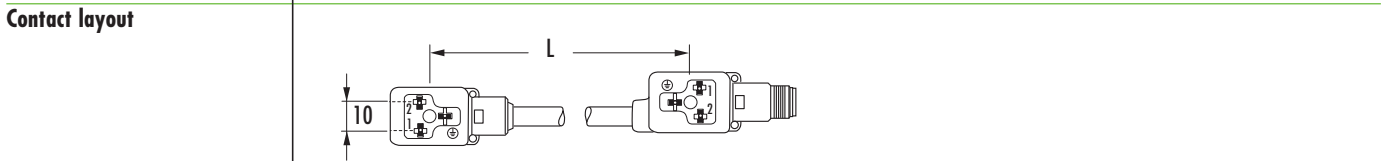
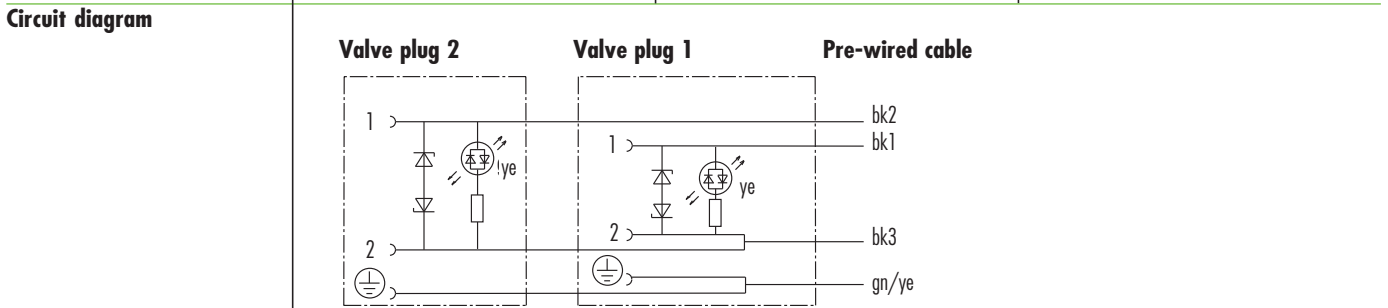
Double valve plug
with pre-wired cable

Form B (10 mm)



1	Form	No.	58201	58221	58241
---	------	-----	-------	-------	-------

Suppression	3-pole, 24 V AC/DC Version L = 100 mm	3-pole, 24 V AC/DC Version L = 150 mm	3-pole, 24 V AC/DC Version L = 200 mm
-------------	--	--	--



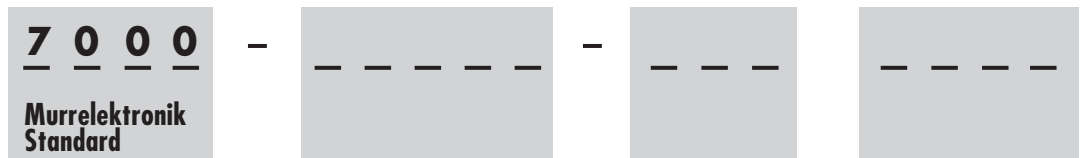
Jacket color for pre-wired cable = Jacket color for connection cable

2	Cable type	Jacket color			Jacket color			Jacket color		
		yellow	gray	black	yellow	gray	black	yellow	gray	black
	Wire diameter 0.75 mm ²	yellow	gray	black	yellow	gray	black	yellow	gray	black
	PVC	017	217	617	017	217	617	017	217	617
	PUR/PVC	027	227	627	027	227	627	027	227	627
	PUR (UL/CSA-listed)	037	237	637	037	237	637	037	237	637

3	Cable length	
	1.5 m	0150
	3.0 m	0300
	5.0 m	0500
	7.5 m	0750
	10.0 m	1000

Your article no.

The composition of your article number is explained on page 1.1.2



1	Form	2	Cable type	3	Cable length
---	------	---	------------	---	--------------

Notes
Accessories and technical data in chapter 1.10.
Further cable lengths on request.

Valve plug

Valve plug

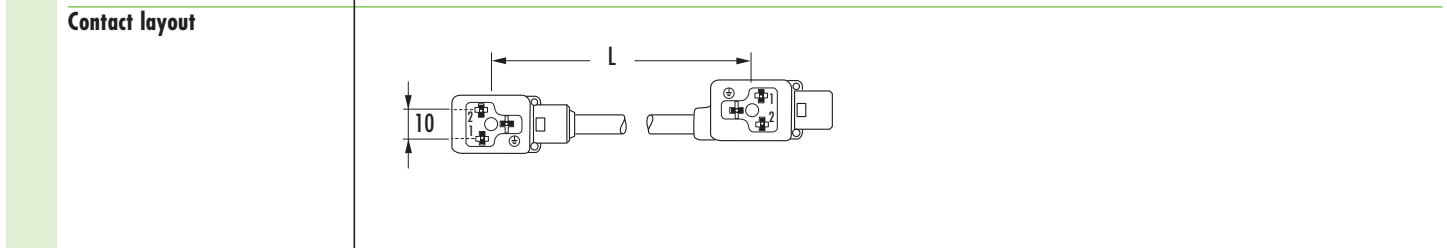
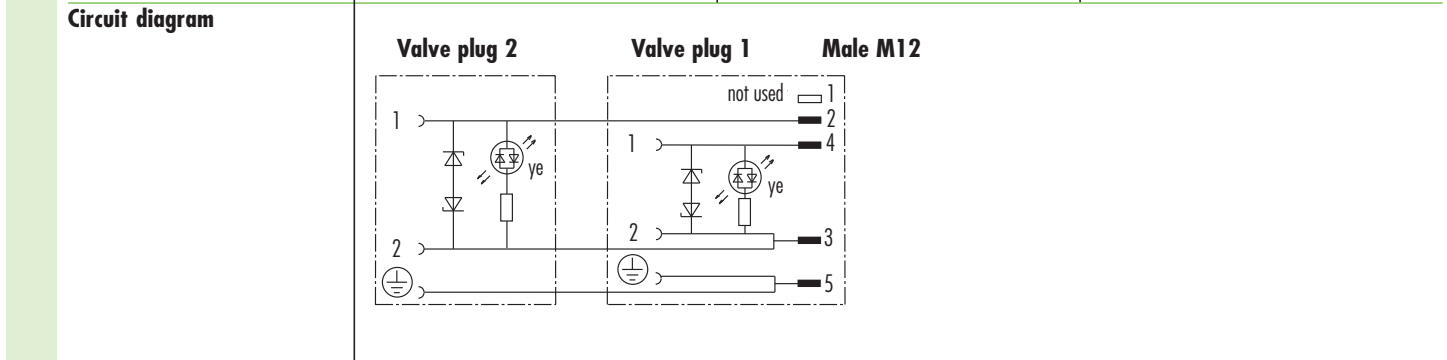
Double valve plug
Male M12
connector top entry

Form B (10 mm)



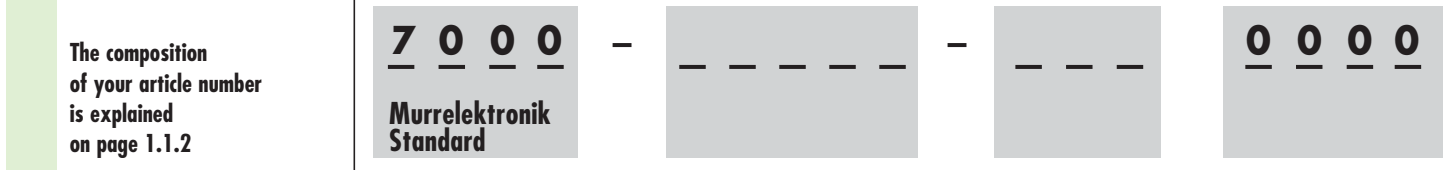
Valve plug

1	Form	No.	41621	41641	41661
	Suppression		3-pole, 24 V AC/DC L = 100 mm	3-pole, 24 V AC/DC L = 150 mm	3-pole, 24 V AC/DC L = 200 mm



2	Cable type	Jacket color			Jacket color			Jacket color		
		yellow	gray	black	yellow	gray	black	yellow	gray	black
	Wire diameter 0.75 mm ²	yellow	gray	black	yellow	gray	black	yellow	gray	black
	PVC	016	216	616	016	216	616	016	216	616
	PUR/PVC	026	226	626	026	226	626	026	226	626
	PUR (UL/CSA-listed)	036	236	636	036	236	636	036	236	636

Your article no.



The composition of your article number is explained on page 1.1.2

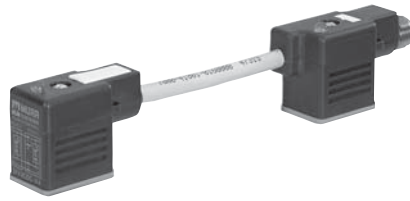
1 Form **2** Cable type

Notes
Accessories and technical data in chapter 1.10.
Further cable lengths on request.

Valve plug

Double valve plug
Male M12
connector at the rear

Form B (10 mm)



1	Form	No.	41681			41701			41721		
	Suppression	3-pole, 24 V AC/DC L = 100 mm			3-pole, 24 V AC/DC L = 150 mm			3-pole, 24 V AC/DC L = 200 mm			
Circuit diagram	<div style="display: flex; justify-content: space-around;"> <div style="text-align: center;"> <p>Valve plug 2</p> </div> <div style="text-align: center;"> <p>Valve plug 1</p> </div> <div style="text-align: center;"> <p>Male M12</p> </div> </div>										
Contact layout											
2	Cable type	Jacket color			Jacket color			Jacket color			
	Wire diameter 0.75 mm²	yellow	gray	black	yellow	gray	black	yellow	gray	black	
	PVC	016	216	616	016	216	616	016	216	616	
	PUR/PVC	026	226	626	026	226	626	026	226	626	
	PUR (UL/CSA-listed)	036	236	636	036	236	636	036	236	636	
Your article no.											
The composition of your article number is explained on page 1.1.2	<div style="display: flex; align-items: center; justify-content: center;"> <div style="border: 1px solid black; padding: 5px; margin: 5px;"> 7 0 0 0 Murrelektronik Standard </div> - <div style="border: 1px solid black; width: 100px; height: 40px; margin: 5px;"></div> - <div style="border: 1px solid black; width: 100px; height: 40px; margin: 5px;"></div> <div style="border: 1px solid black; padding: 5px; margin: 5px;"> 0 0 0 0 </div> </div>										
Notes	<div style="display: flex; justify-content: space-around; margin-bottom: 10px;"> 1 Form 2 Cable type </div> <p>Accessories and technical data in chapter 1.10. Further cable lengths on request.</p>										

Valve plug

Valve plug

Double valve plug
with pre-wired cable

Form BI (11 mm)
Industrial standard



1	Form	No.	58101	58121	58141					
	Suppression	3-pole, 24 V AC/DC Version L = 100 mm		3-pole, 24 V AC/DC Version L = 150 mm	3-pole, 24 V AC/DC Version L = 200 mm					
1	Circuit diagram									
	Contact layout	<p>Jacket color for pre-wired cable = Jacket color for connection cable</p>								
2	Cable type	Jacket color			Jacket color			Jacket color		
	Wire diameter 0.75 mm²	yellow	gray	black	yellow	gray	black	yellow	gray	black
	PVC	017	217	617	017	217	617	017	217	617
	PUR/PVC	027	227	627	027	227	627	027	227	627
	PUR (UL/CSA-listed)	037	237	637	037	237	637	037	237	637
3	Cable length									
	1.5 m	0150								
	3.0 m	0300								
	5.0 m	0500								
	7.5 m	0750								
	10.0 m	1000								
Your article no.										
The composition of your article number is explained on page 1.1.2	<p>Murrelektronik Standard</p>									
	1 Form			2 Cable type			3 Cable length			

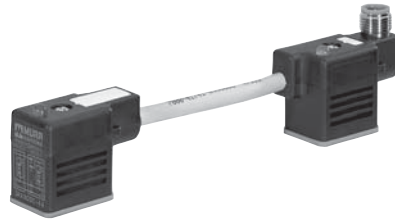
Valve plug

Notes
Accessories and technical data in chapter 1.10.
Further cable lengths on request.

Valve plug

Double valve plug
Male M12
connector top entry

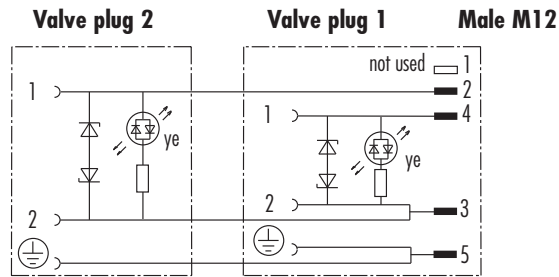
Form BI (11 mm)
Industrial standard



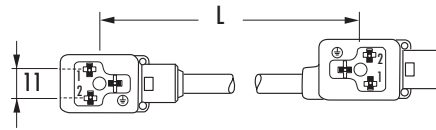
Valve plug

1	Form	No.	4 1 7 4 1	4 1 7 6 1	4 1 7 8 1
	Suppression		3-pole, 24 V AC/DC L = 100 mm	3-pole, 24 V AC/DC L = 150 mm	3-pole, 24 V AC/DC L = 200 mm

Circuit diagram



Contact layout



2	Cable type	Jacket color			Jacket color			Jacket color		
	Wire diameter 0.75 mm ²	yellow	gray	black	yellow	gray	black	yellow	gray	black
	PVC	016	216	616	016	216	616	016	216	616
	PUR/PVC	026	226	626	026	226	626	026	226	626
	PUR (UL/CSA-listed)	036	236	636	036	236	636	036	236	636

Your article no.

The composition of your article number is explained on page 1.1.2



1 Form

2 Cable type

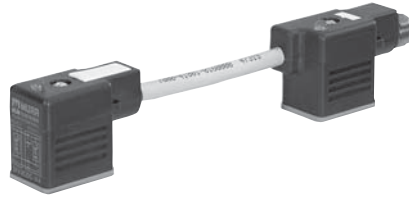
Notes

Accessories and technical data in chapter 1.10.
Further cable lengths on request.

Valve plug

Double valve plug
Male M12
connector at the rear

Form BI (11 mm)
Industrial standard



1	Form	No.	4 1 8 0 1			4 1 8 2 1			4 1 8 4 1		
	Suppression	3-pole, 24 V AC/DC L = 100 mm			3-pole, 24 V AC/DC L = 150 mm			3-pole, 24 V AC/DC L = 200 mm			
Circuit diagram											
			Valve plug 2			Valve plug 1			Male M12		
Contact layout											
2	Cable type		Jacket color			Jacket color			Jacket color		
	Wire diameter 0.75 mm ²		yellow	gray	black	yellow	gray	black	yellow	gray	black
	PVC		016	216	616	016	216	616	016	216	616
	PUR/PVC		026	226	626	026	226	626	026	226	626
	PUR (UL/CSA-listed)		036	236	636	036	236	636	036	236	636
Your article no.											
The composition of your article number is explained on page 1.1.2			7 0 0 0			-			0 0 0 0		
			Murrelektronik Standard			-			-		
1 Form						2 Cable type					
Notes											
Accessories and technical data in chapter 1.10. Further cable lengths on request.											

Valve plug

Valve plug

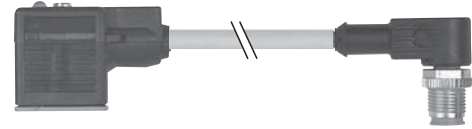
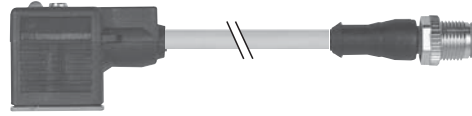
Connection cable
Valve plug - M12

Form A (18 mm)

Male M12
straight

Form A (18 mm)

Male M12
90°



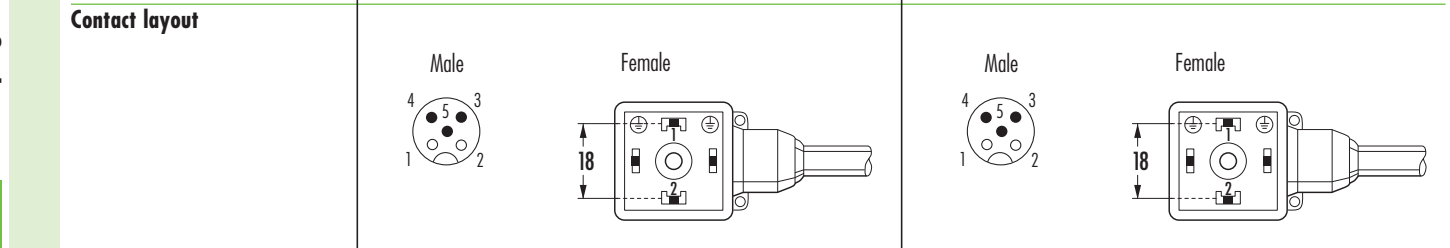
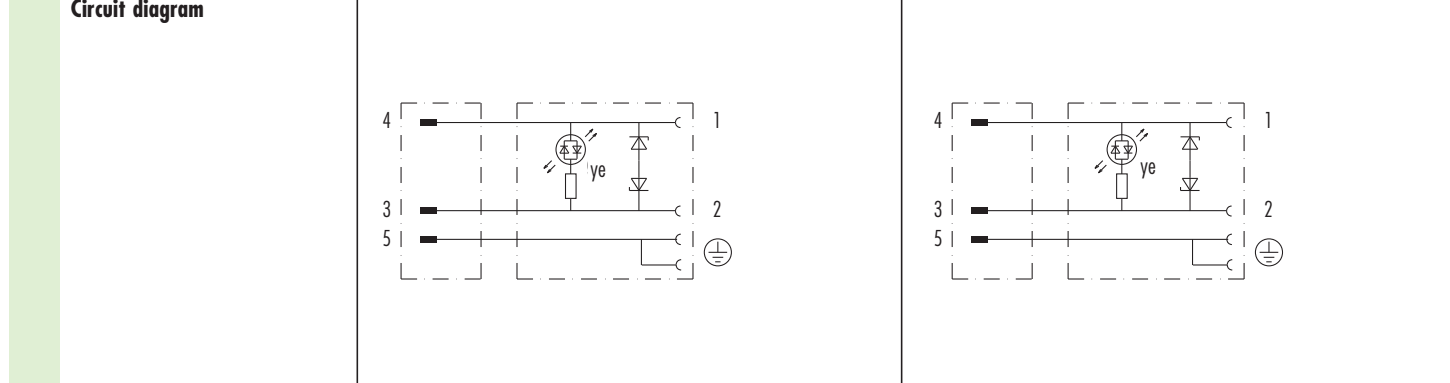
Approvals:



Valve plug

1	Form	No.	40881	40901
----------	-------------	------------	--------------	--------------

Suppression	3-pole, 24 V AC/DC	3-pole, 24 V AC/DC
--------------------	---------------------------	---------------------------



2	Cable type	Jacket color			Jacket color		
----------	-------------------	---------------------	--	--	---------------------	--	--

Wire diameter 0.75 mm²	yellow	gray	black	yellow	gray	black
PVC	016	216	616	016	216	616
PUR/PVC	026	226	626	026	226	626
PUR (UL/CSA-listed)	036	236	636	036	236	636
Suitable for robot cable (irradiated)	056	256	656	056	256	656

3	Cable length
----------	---------------------

0.3 m	0030
0.6 m	0060
1.0 m	0100
1.5 m	0150
2.0 m	0200

Your article no.

The composition of your article number is explained on page 1.1.2

7 0 0 0	-	_ _ _ _	-	_ _ _	_ _ _ _
Murrelektronik Standard					

1	Form	2	Cable type	3	Cable length
----------	-------------	----------	-------------------	----------	---------------------

Notes

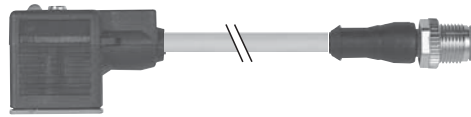
Accessories and technical data in chapter 1.10.
Further cable lengths on request.

Valve plug

Connection cable
Valve plug - M12
for pressure switches

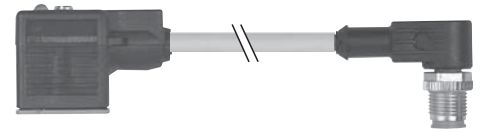
Form A (18 mm)

Male M12
straight



Form A (18 mm)

Male M12
90°



Approvals:

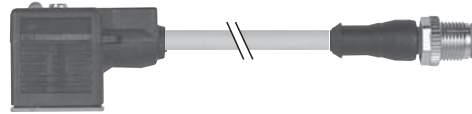
1 Form	No.	40921	40941								
Suppression		5-pole, 24 V DC LED red/green	5-pole, 24 V DC LED red/green								
Circuit diagram											
Contact layout											
2 Cable type	Cable type	Jacket color									
Wire diameter 0.34 mm ²		yellow	gray	black	yellow	gray	black				
PVC		015	215	615	015	215	615				
PUR/PVC		025	225	625	025	225	625				
PUR (UL/CSA-listed)		035	235	635	035	235	635				
Suitable for robot cable (irradiated)		055	255	655	055	255	655				
3 Cable length	Cable length										
	0.3 m	0030									
	0.6 m	0060									
	1.0 m	0100									
	1.5 m	0150									
	2.0 m	0200									
Your article no.											
The composition of your article number is explained on page 1.1.2		7 0 0 0 - - - 									
		Murrelektronik Standard									
		1	Form		2	Cable type		3	Cable length		
Notes		Accessories and technical data in chapter 1.10. Further cable lengths on request.									

Valve plug

Connection cable
Valve plug - M12
for pressure switches

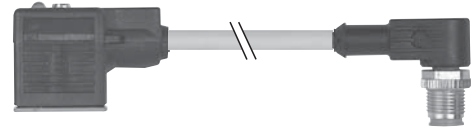
Form A (18 mm)

Male M12
straight



Form A (18 mm)

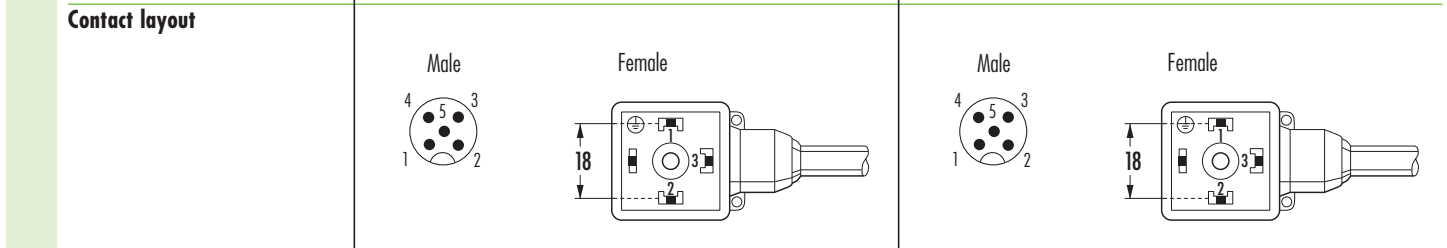
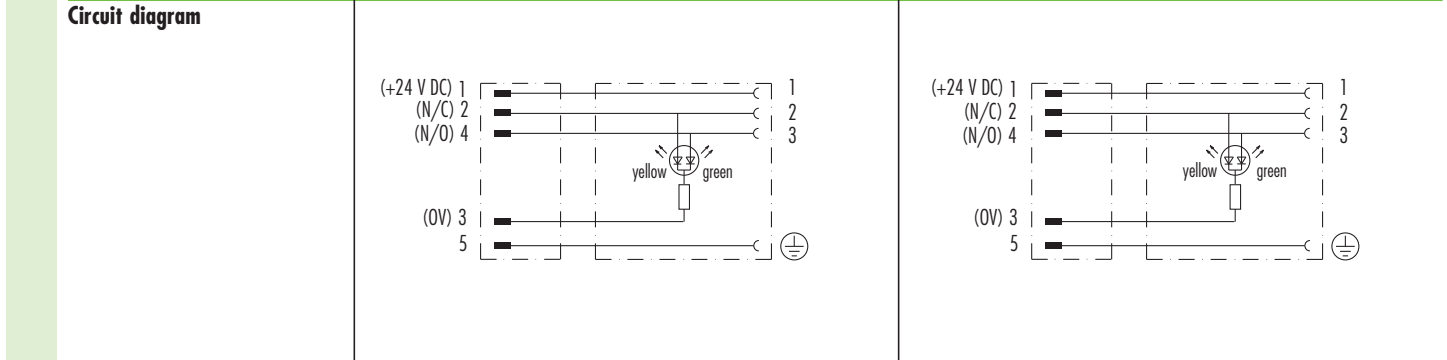
Male M12
90°



Valve plug

1	Form	No.	40931	40951
----------	-------------	------------	--------------	--------------

Suppression	5-pole, 24 V DC LED yellow/green	5-pole, 24 V DC LED yellow/green
--------------------	---	---



2	Cable type	Jacket color			Jacket color		
----------	-------------------	---------------------	--	--	---------------------	--	--

Wire diameter 0.34 mm²	yellow	gray	black	yellow	gray	black
PVC	015	215	615	015	215	615
PUR/PVC	025	225	625	025	225	625
PUR (UL/CSA-listed)	035	235	635	035	235	635
Suitable for robot cable (irradiated)	055	255	655	055	255	655

3	Cable length
----------	---------------------

0.3 m	0030
0.6 m	0060
1.0 m	0100
1.5 m	0150
2.0 m	0200

Your article no.

The composition of your article number is explained on page 1.1.2

7	0	0	0	-	-	-	-
Murrelektronik Standard							

1	Form	2	Cable type	3	Cable length
----------	-------------	----------	-------------------	----------	---------------------

Notes

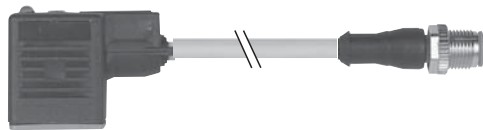
Accessories and technical data in chapter 1.10.
Further cable lengths on request.

Valve plug

Connection cable
Valve plug - M12

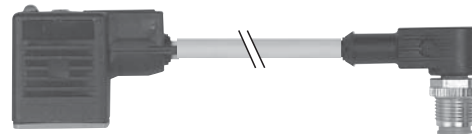
Form B (10 mm)

Male M12
straight



Form B (10 mm)

Male M12
90°



Valve plug

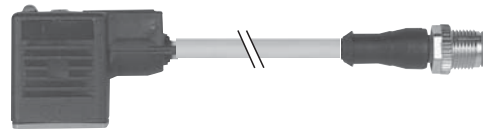
1	Form	No.	4 1 0 0 1			4 1 0 2 1					
	Suppression Circuit diagram	3-pole, 24 V AC/DC			3-pole, 24 V AC/DC						
	Contact layout										
2	Cable type		Jacket color			Jacket color					
	Wire diameter 0.75 mm²		yellow	gray	black	yellow	gray	black			
	PVC		016	216	616	016	216	616			
	PUR/PVC		026	226	626	026	226	626			
	PUR (UL/CSA-listed)		036	236	636	036	236	636			
Suitable for robot cable (irradiated)		056	256	656	056	256	656				
3	Cable length										
	0.3 m		0030								
	0.6 m		0060								
	1.0 m		0100								
	1.5 m		0150								
	2.0 m		0200								
Your article no.											
The composition of your article number is explained on page 1.1.2		<div style="display: flex; align-items: center; gap: 10px;"> <div style="border: 1px solid black; padding: 5px; text-align: center;"> 7 0 0 0 Murrelektronik Standard </div> - <div style="border: 1px solid gray; width: 100px; height: 30px; display: flex; align-items: center; justify-content: center;"> - - - - - </div> - <div style="border: 1px solid gray; width: 100px; height: 30px; display: flex; align-items: center; justify-content: center;"> - - - - - </div> <div style="border: 1px solid gray; width: 100px; height: 30px; display: flex; align-items: center; justify-content: center;"> - - - - - </div> </div>									
		1	Form			2	Cable type		3	Cable length	
Notes		Accessories and technical data in chapter 1.10. Further cable lengths on request.									

Valve plug

Connection cable
Valve plug - M12

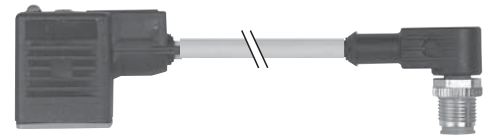
Form BI (11 mm)
Industrial standard

Male M12
straight



Form BI (11 mm)
Industrial standard

Male M12
90°



1	Form No.	40961	40981				
	Suppression Circuit diagram	3-pole, 24 V AC/DC	3-pole, 24 V AC/DC				
	Circuit diagram						
	Contact layout						
2	Cable type	Jacket color					
	Wire diameter 0.75 mm²	yellow	gray	black	yellow	gray	black
	PVC	016	216	616	016	216	616
	PUR/PVC	026	226	626	026	226	626
	PUR (UL/CSA-listed)	036	236	636	036	236	636
Suitable for robot cable (irradiated)	056	256	656	056	256	656	
3	Cable length						
	0.3 m	0030					
	0.6 m	0060					
	1.0 m	0100					
	1.5 m	0150					
	2.0 m	0200					
	Your article no.						
	The composition of your article number is explained on page 1.1.2	7 0 0 0	-	---	-	---	---
		Murrelektronik Standard					
		1	Form	2	Cable type	3	Cable length
Notes	Accessories and technical data in chapter 1.10. Further cable lengths on request.						

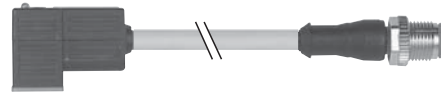
Valve plug

Valve plug

Connection cable
Valve plug - M12

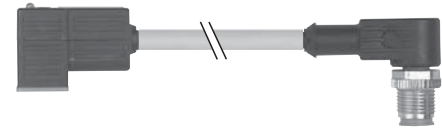
Form C (8 mm)

Male M12
straight



Form C (8 mm)

Male M12
90°



Approvals:

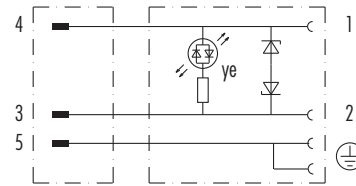
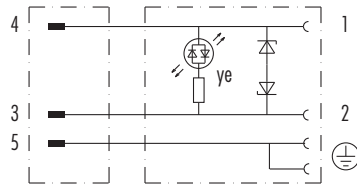
Valve plug

1	Form	No.	4 1 0 8 1	4 1 1 0 1
----------	-------------	------------	------------------	------------------

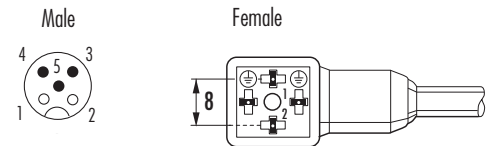
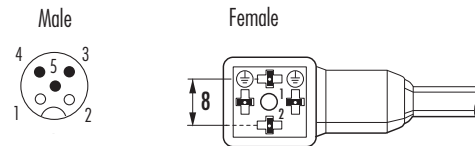
Suppression
Circuit diagram

3-pole, 24 V AC/DC

3-pole, 24 V AC/DC



Contact layout



2	Cable type	Jacket color			Jacket color		
----------	-------------------	---------------------	--	--	---------------------	--	--

Wire diameter 0.75 mm ²	yellow	gray	black	yellow	gray	black
PVC	016	216	616	016	216	616
PUR/PVC	026	226	626	026	226	626
PUR (UL/CSA-listed)	036	236	636	036	236	636
Suitable for robot cable (irradiated)	056	256	656	056	256	656

3	Cable length
----------	---------------------

0.3 m	0030
0.6 m	0060
1.0 m	0100
1.5 m	0150
2.0 m	0200

Your article no.

The composition
of your article number
is explained
on page 1.1.2

7 0 0 0 - - - - -
**Murrelektronik
Standard**

1 Form **2** Cable type **3** Cable length

Notes

Accessories and technical data in chapter 1.10.
Further cable lengths on request.

Valve plug

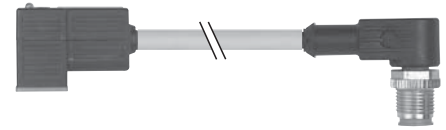
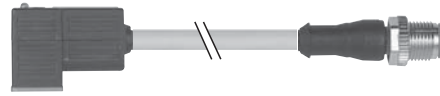
Connection cable
Valve plug - M12

Form CI (9.4 mm)
Industrial standard

Male M12
straight

Form CI (9.4 mm)
Industrial standard

Male M12
90°



Approvals:

1 Form		No. 41041			41061		
Suppression Circuit diagram		3-pole, 24 V AC/DC			3-pole, 24 V AC/DC		
Contact layout							
2 Cable type		Jacket color			Jacket color		
Wire diameter 0.75 mm ²		yellow	gray	black	yellow	gray	black
PVC		016	216	616	016	216	616
PUR/PVC		026	226	626	026	226	626
PUR (UL/CSA-listed)		036	236	636	036	236	636
Suitable for robot cable (irradiated)		056	256	656	056	256	656
3 Cable length							
0.3 m		0030					
0.6 m		0060					
1.0 m		0100					
1.5 m		0150					
2.0 m		0200					
Your article no.							
The composition of your article number is explained on page 1.1.2		<div style="display: flex; align-items: center; gap: 10px;"> <div style="border: 1px solid black; padding: 5px; text-align: center;"> 7 0 0 0 Murrelektronik Standard </div> - <div style="border: 1px solid gray; width: 60px; height: 30px; background-color: #ccc;"></div> - <div style="border: 1px solid gray; width: 60px; height: 30px; background-color: #ccc;"></div> - <div style="border: 1px solid gray; width: 60px; height: 30px; background-color: #ccc;"></div> </div>					
		1 Form		2 Cable type		3 Cable length	
Notes		Accessories and technical data in chapter 1.10. Further cable lengths on request.					

Valve plug

Valve plug

Adapter
Valve plug - M12

Form A (18 mm)
Connector top entry



Valve plug

1	Form	No.	4 1 2 6 1	4 1 2 8 1	4 1 3 0 1	4 1 3 2 1	
	Suppression		3-pole without electronics	3-pole with LED	3-pole with LED and suppression	5-pole for pressure switches	
	Circuit diagram						
	Contact layout		<p>Male</p> <p>Female</p>	<p>Male</p> <p>Female</p>	<p>Male</p> <p>Female</p>	<p>Male</p> <p>Female</p>	
	Technical data						
	Supply voltage		24 V AC/DC			24 V DC	
	Supply current		max. 4 A				
	Form		A to DIN 43650 (ISO 4400), contact form 18 mm (valves: 2 contacts, PE bridged; pressure switches: 3 contacts, PE opposite plug connector)				
	Switch off spike		≤ 55 V				
	Status indicator		–	yellow	yellow	yellow/green	
	Current usage		max. 15 mA				
	Connection		M12 x 1 round plug connector, 3-pole resp. 5-pole				
	Protection		IP67 when plugged and screwed down				
	Temperature range		-25...+85 °C				
	Dimensions	H x W x D	38 x 27 x 36 mm				
	Your article no.						
	The composition of your article number is explained on page 1.1.2		7 0 0 0	–	–	0 0 0	0 0 0 0
			Murrelektronik Standard				
			1 Form				
	Notes						
			Accessories and technical data in chapter 1.10.				

Valve plug

Adapter
Valve plug - M12

Form A (18 mm)
Connection at the rear



1 Form	No.	41381	41401	41421	41441			
Suppression		3-pole without electronics	3-pole with LED	3-pole with LED and suppression	5-pole for pressure switches			
Circuit diagram								
Contact layout		<p>Male</p> <p>Female</p>	<p>Male</p> <p>Female</p>	<p>Male</p> <p>Female</p>	<p>Male</p> <p>Female</p>			
Technical data								
Supply voltage		24 V AC/DC			24 V DC			
Supply current		max. 4 A						
Form		A to DIN 43650 (ISO 4400), contact form 18 mm (valves: 2 contacts, PE bridged; pressure switches: 3 contacts, PE opposite plug connector)						
Switch off spike		≤ 55 V						
Status indicator		–	yellow	yellow	yellow/green			
Current usage		max. 15 mA						
Connection		M12 x 1 round plug connector, 3-pole resp. 5-pole						
Protection		IP67 when plugged and screwed down						
Temperature range		-25...+85 °C						
Dimensions	H x W x D	48 x 27 x 25 mm						
Your article no.								
The composition of your article number is explained on page 1.1.2		7 0 0 0	–	–	–	–	0 0 0	0 0 0 0
		Murrelektronik Standard						
		1 Form						
Notes		Accessories and technical data in chapter 1.10.						

Adapter
Valve plug - M12

Form B (10 mm)
Connection at top entry



Valve plug

1	Form	No.	4 1 8 6 1	4 1 8 8 1	4 1 9 0 1
	Suppression		3-pole without electronics	3-pole with LED	3-pole with LED and suppression
	Circuit diagram				
	Contact layout		<p>Male</p> <p>Female</p>	<p>Male</p> <p>Female</p>	<p>Male</p> <p>Female</p>
Technical data					
	Supply voltage		24 V AC/DC		
	Supply current		max. 4 A		
	Form		B to DIN 43650 (ISO 4400), contact form 10 mm (valves: 2 contacts, PE)		
	Switch off spike		≤ 55 V		
	Status indicator		–	yellow	yellow
	Current usage		max. 15 mA		
	Connection		M12 x 1 round plug connector, 3-pole		
	Protection		IP67 when plugged and screwed down		
	Temperature range		-25...+85 °C		
	Dimensions	H x W x D	40 x 22 x 43 mm		
Your article no.					
	The composition of your article number is explained on page 1.1.2		<div style="border: 1px solid black; padding: 2px; display: inline-block;">7</div> <div style="border: 1px solid black; padding: 2px; display: inline-block;">0</div> <div style="border: 1px solid black; padding: 2px; display: inline-block;">0</div> <div style="border: 1px solid black; padding: 2px; display: inline-block;">0</div> – <div style="border: 1px solid black; padding: 2px; display: inline-block; width: 20px; height: 20px;"></div> – <div style="border: 1px solid black; padding: 2px; display: inline-block;">0</div> <div style="border: 1px solid black; padding: 2px; display: inline-block;">0</div> <div style="border: 1px solid black; padding: 2px; display: inline-block;">0</div> <div style="border: 1px solid black; padding: 2px; display: inline-block;">0</div>		
1 Form					
Notes					
			Accessories and technical data in chapter 1.10.		

Adapter
Valve plug - M12

Form B (10 mm)
Connection at the rear



1	Form	No.	4 1 9 2 1	4 1 9 4 1	4 1 9 6 1
	Suppression		3-pole without electronics	3-pole with LED	3-pole with LED and suppression
	Circuit diagram				
	Contact layout		<p>Male</p> <p>Female</p>	<p>Male</p> <p>Female</p>	<p>Male</p> <p>Female</p>
Technical data					
	Supply voltage		24 V AC/DC		
	Supply current		max. 4 A		
	Form		B to DIN 43650 (ISO 4400), contact form 10 mm (valves: 2 contacts, PE)		
	Switch off spike		≤ 55 V		
	Status indicator		–	yellow	yellow
	Current usage		max. 15 mA		
	Connection		M12 x 1 round plug connector, 3-pole		
	Protection		IP67 when plugged and screwed down		
	Temperature range		-25...+85 °C		
	Dimensions	H x W x D	31 x 22 x 52 mm		
Your article no.					
	The composition of your article number is explained on page 1.1.2		7 0 0 0 – – 0 0 0 0 0 0 0		
			1 Form		
Notes					
			Accessories and technical data in chapter 1.10.		

Adapter
Valve plug - M12

Form BI (11 mm) Industrial standard
Connector top entry



Valve plug

1	Form	No.	4 1 9 8 1	4 2 0 0 1	4 2 0 2 1	
	Suppression		3-pole without electronics	3-pole with LED	3-pole with LED and suppression	
	Circuit diagram					
	Contact layout		<p>Male</p> <p>Female</p>	<p>Male</p> <p>Female</p>	<p>Male</p> <p>Female</p>	
Technical data						
	Supply voltage		24 V AC/DC			
	Supply current		max. 4 A			
	Form		BI to DIN 43650 (ISO 4400), contact form 11 mm (valves: 2 contacts, PE)			
	Switch off spike		≤ 55 V			
	Status indicator		–	yellow	yellow	
	Current usage		max. 15 mA			
	Connection		M12 x 1 round plug connector, 3-pole			
	Protection		IP67 when plugged and screwed down			
	Temperature range		-25...+85 °C			
	Dimensions	H x W x D	40 x 22 x 43 mm			
Your article no.						
	The composition of your article number is explained on page 1.1.2		<div style="border: 1px solid black; padding: 2px; display: inline-block;">7</div> <div style="border: 1px solid black; padding: 2px; display: inline-block;">0</div> <div style="border: 1px solid black; padding: 2px; display: inline-block;">0</div> <div style="border: 1px solid black; padding: 2px; display: inline-block;">0</div> – <div style="border: 1px solid black; padding: 2px; display: inline-block; width: 20px; height: 20px;"></div> – <div style="border: 1px solid black; padding: 2px; display: inline-block;">0</div> <div style="border: 1px solid black; padding: 2px; display: inline-block;">0</div> <div style="border: 1px solid black; padding: 2px; display: inline-block;">0</div> <div style="border: 1px solid black; padding: 2px; display: inline-block;">0</div> <div style="border: 1px solid black; padding: 2px; display: inline-block;">0</div> <div style="border: 1px solid black; padding: 2px; display: inline-block;">0</div> <div style="border: 1px solid black; padding: 2px; display: inline-block;">0</div> <div style="border: 1px solid black; padding: 2px; display: inline-block;">0</div>			
1 Form						
Notes						
			Accessories and technical data in chapter 1.10.			

Adapter
Valve plug - M12

Form BI (11 mm) Industrial standard
Connection at the rear



1 Form	No.	42041	42061	42081	
Suppression		3-pole without electronics	3-pole with LED	3-pole with LED and suppression	
Circuit diagram					
Contact layout		<p>Male</p> <p>Female</p>	<p>Male</p> <p>Female</p>	<p>Male</p> <p>Female</p>	
Technical data					
Supply voltage		24 V AC/DC			
Supply current		max. 4 A			
Form		A to DIN 43650 (ISO 4400), contact form 18 mm (valves: 2 contacts, PE)			
Switch off spike		≤ 55 V			
Status indicator		–	yellow	yellow	
Current usage		max. 15 mA			
Connection		M12 x 1 round plug connector, 3-pole resp. 5-pole used (males)			
Protection		IP67 when plugged and screwed down			
Temperature range		-25...+85 °C			
Dimensions	H x W x D	48 x 27 x 25 mm			
Your article no.					
The composition of your article number is explained on page 1.1.2		7 0 0 0	–	0 0 0	0 0 0 0
		Murrelektronik Standard			
		1 Form			
Notes					
		Accessories and technical data in chapter 1.10.			