

General information on eurocard holders

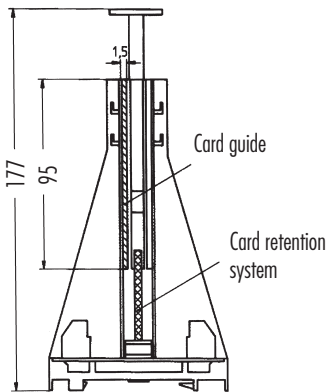
Various electronic circuits are fitted on to eurocards 100 x 160 mm and then placed in 19"- system housings. With Murrelektronik's plug in card holders, it is possible to build the eurocards into a control panel.

The series SKP or SKT can be simply snapped onto 35 mm DIN-rail to EN 60715.

Wiring is via screw terminals mounted on to the PCB of the card holder.

The eurocard holders offer a wide range of connectors. The various connector formats are defined in EN 60603 and DIN 41617. It is therefore only necessary to check the male connector on your card and choose the corresponding female socket version of the Murrelektronik eurocard holders.

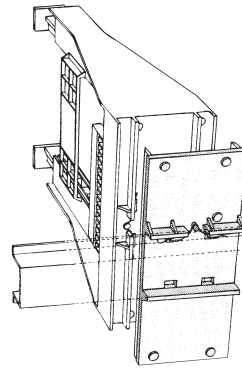
Instructions



The eurocard holders have two yellow push buttons on the top of the holders (i.e. forward facing when mounted). These are connected to the card retention system at the base of the card. When a card is inserted, it pushes down the clips and locks into place. By re-pressing the yellow push buttons the card is released and can be removed. This system ensures an optimal connection to the card at any times.

On the SKP, components with a height of up to 18 mm can be soldered onto the PCB.

Mounting method



The compact holder SKT can be mounted onto DIN-rail without any additional accessories, at 90 degree to it.

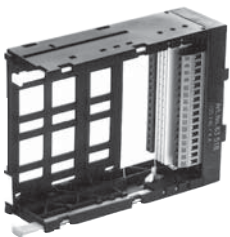
The SKP series require the SASA 135, Art.-No. 63900 snap foot to allow mounting at 90 degree.

Both models SKP and SKT can also be screw fixed as an alternative to DIN-rail.

The SKP series with 18 digits Art.-No. 4000-63011 . . . are rail mountable in both directions without accessories.

The connection can be done via spring clamp terminals.

Eurocard holders



SKT

Straight sided compact eurocard holders made of plastic for inserting eurocards 100 x 160 mm with 31-pole connector to DIN 41617 or 32-pole connectors EN 60603, form B, C, D or F.

Signal output via screw terminals.

DIN-rail mounting to EN 60715 or screw fixing.

from page 3.8.2



SKP

Compact eurocard holders made of plastic for inserting eurocards 100 x 160 mm with 31-pole connectors DIN 41617 or 11-, 15-, 32-, 48-, 64- or 96-pole connectors EN 60603, form B, C, D, F, G, M.

Signal output via screw or spring clamp terminals.

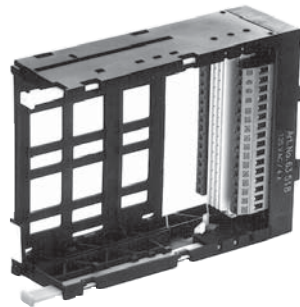
DIN-rail mounting to EN 60715 or screw fixing.

from page 3.8.4

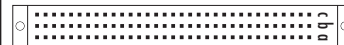
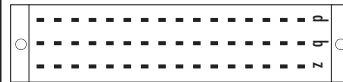
Suitable for eurocards
100 x 160 mm

SKT
form F
32-pole
DIN 41612

SKT
form C
32-pole
DIN 41612



Form (pin arrangement)



Ordering data

No. of poles	Pin config.	Art.-No.	Art.-No.
32-pole	row b, z	63510	
32-pole	row d, z	63518	
32-pole	row a, c		63516

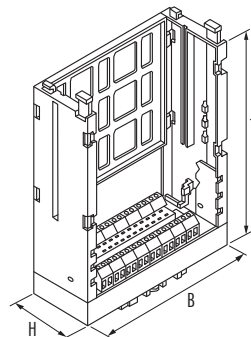
Technical data

Supply voltage	250 V AC	
Supply current	max. 4 A	max. 2 A
Form of connector (female)	32-pole F to DIN 41612	32-pole C to DIN 41612
Wiring method	4 mm ² single wire	
Air and creepage distance	(EN 60664-1) cat. I	
Mounting method	vertically or horizontally on DIN-rail mounting to EN 60715 or screw fixed	
Material	flame retardant plastic	
Dimensions H x B x T (T ₂) ¹⁾	45 x 112 x 145 (200) mm	45 x 112 x 145 (190) mm

Function description

To insert the card first press down the 2 yellow buttons, then slide the card into the guide slots, pushing fully home. The card is then locked into position and can only be removed by pressing again down the 2 yellow buttons.

Dimension drawing



Notes

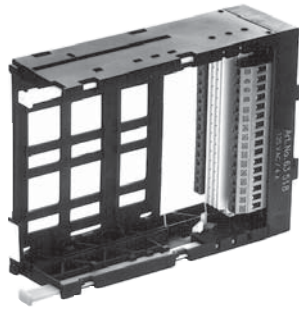
For SKP series Art.-No. changes from **635...** into Art.-No. **630...**

¹⁾ The T₂ size is for a card without a front plate.

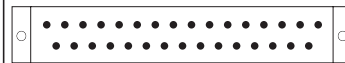
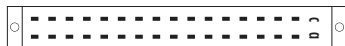
Suitable for eurocards
100 x 160 mm

SKT
form D
32-pole
(DIN 416112)

SKT
31-pole
(DIN 41617)



Form (pin arrangement)



Ordering data

No. of poles	Pin config.	Art.-No.	Art.-No.
31-pole	all		63501
32-pole	row a, c	63512	

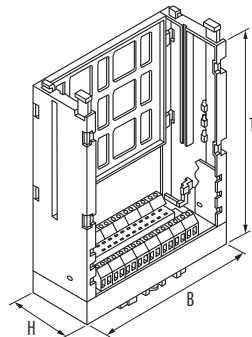
Technical data

Supply voltage	250 V AC	250 V AC
Supply current	max. 4 A	max. 5 A
Form of connector (female)	32-pole D to DIN 416112	31-pole to DIN 41617
Wiring method	4 mm ² single wire	
Air and creepage distance	(EN 60664-1) cat. I	
Mounting method	vertically or horizontally on DIN-rail mounting to EN 60715 or screw fixed	
Material	flame retardant plastic	
Dimensions H x B x T (T ₂) ¹⁾	45 x 112 x 145 (190) mm	45 x 112 x 145 (185) mm

Function description

To insert the card first press down the 2 yellow buttons, then slide the card into the guide slots, pushing fully home. The card is then locked into position and can only be removed by pressing again down the 2 yellow buttons.

Dimension drawing



Notes

For SKP series Art.-No. changes from **635...** into Art.-No. **630...**

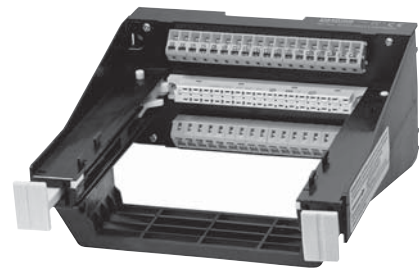
¹⁾ The T₂ size is for a card without a front plate.

Suitable for eurocards
100 x 160 mm

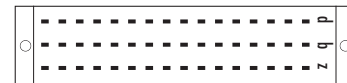
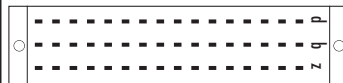
SKP
form F
48-pole
(DIN 416112)



SKP
form F
32-/48-pole
(DIN 416112)



Form (pin arrangement)



Ordering data

Art.-No.

Art.-No.

No. of poles	Pin config.	terminal type	Art.-No.
32-pole	row b, z	screw terminals	4000-63011-4253200
48-pole	row z, b, d	screw terminals	63020
		spring clamp terminals	4000-63011-4304800

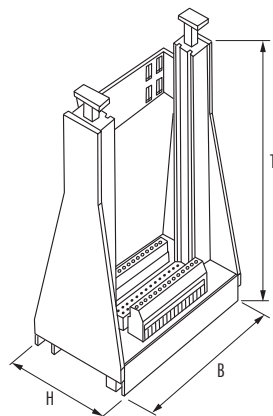
Technical data

Supply voltage	250 V AC
Supply current	max. 4 A
Form of connector (female)	F to EN 60603
Wiring method	4 mm ² single wire
Air and creepage distance	(EN 60664-1) cat. I
Mounting method	DIN-rail mounting to EN 60715 or screw fixed
Material	flame retardant plastic
Dimensions H x B x T (T ₂) ¹⁾	63 x 140 x 143 (195) mm

Function description

To insert the card first press down the 2 yellow buttons, then slide the card into the guide slots, pushing fully home. The card is then locked into position and can only be removed by pressing again down the 2 yellow buttons.

Dimension drawing



Accessories

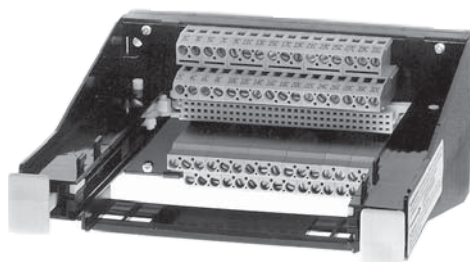
Art.-No. 63020 with vertical snap adapter. SASA 135 Art.-No. **63900** allows the holder to be mounted at right-angles on the rail.

Notes

¹⁾The T₂ size is for a card without a front plate.

Suitable for eurocards
100 x 160 mm

SKP
form C
32-/64-/96-pole
(DIN 416112)



Form (pin arrangement)



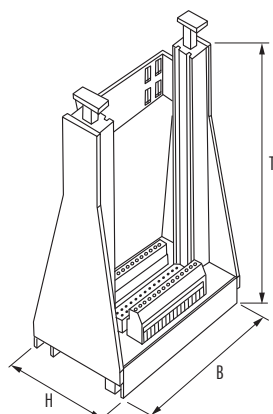
Ordering data		Art.-No.	Art.-No.	Art.-No.	Art.-No.
No. of poles	Pin config.	screw terminals	screw/spring clamp terminals	screw terminals	screw terminals
32-pole	row a, c	¹⁾ 631776			
64-pole	row a, c		63043	631195	
			4000-63011-1236400	631615	
96-pole	row a, b, c				636013

Technical data					
Supply voltage		250 V AC		24 V DC	250 V AC
Supply current		max. 2 A			max. 1 A
Form of connector (female)		32-pole C to DIN 416112	64-pole C to DIN 416112		96-pole C to DIN 416112
Wiring method		4 mm ² single wire			
Air and creepage distance		(EN 60664-1) cat. I		(EN 60664-1) cat. II	(EN 60664-1) cat. I
Mounting method		DIN-rail mounting to EN 60715 or screw fixed			
Material		flame retardant plastic			
Dimensions H x B x T (T ₂) ²⁾		63 x 140 x 143 (185) mm		63 x 140 x 143 (210) mm (Art.-No. 631615: 96 x 140 x 143 (210) mm)	

Function description

To insert the card first press down the 2 yellow buttons, then slide the card into the guide slots, pushing fully home. The card is then locked into position and can only be removed by pressing again down the 2 yellow buttons.

Dimension drawing



Accessories

Adapter Art.-No. **63900** allows the holder to be mounted at right-angles on the rail.

Notes

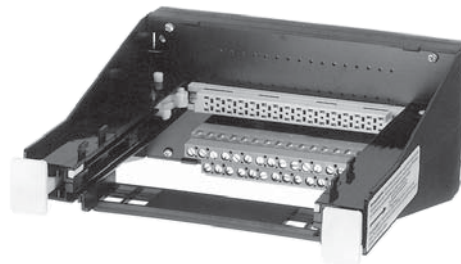
Art.-No. 631195 and 631615 are specially designed for Eberle PLS 509S or Telemecanique TSX 017. Art.-No. 631615 with LED indicators.
¹⁾ Double row terminals on one side row for "a". ²⁾ The T₂ size is for a card without a front plate.

Suitable for eurocards
100 x 160 mm

SKP
form B
64-pole
(DIN 416112)

SKP
form D
32-pole
(DIN 416112)

SKP
form D
32-pole
(DIN 416112)



Form (pin arrangement)



Ordering data

No. of poles	Pin config.	Art.-No.	Art.-No.	Art.-No.
32-pole	row a, c	screw terminals	screw terminals	spring clamp terminals
48-pole	row a, c, e		¹⁾ 630732	4000-63011-2203200
2 x 48-pole	row a, c, e			
64-pole	row a, b	63042		

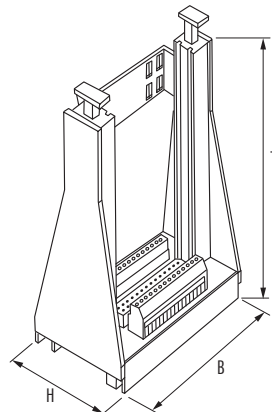
Technical data

Supply voltage	250 V AC	
Supply current	max. 2 A	max. 4 A
Form of connector (female)	64-pole B to DIN 416112	32-pole D to DIN 416112
Wiring method	4 mm ² single wire	
Air and creepage distance	(EN 60664-1) cat. I	cat. III
Mounting method	DIN-rail mounting to EN 60715 or screw fixed	
Material	flame retardant plastic	
Dimensions H x B x T (T ₂) ²⁾	63 x 140 x 143 (185) mm	

Function description

To insert the card first press down the 2 yellow buttons, then slide the card into the guide slots, pushing fully home. The card is then locked into position and can only be removed by pressing again down the 2 yellow buttons.

Dimension drawing



Accessories

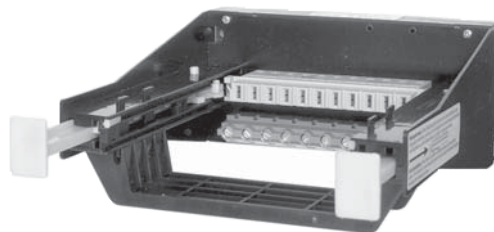
Adapter Art.-No. **63900** allows the holder to be mounted at right-angles on the rail.
A plexiglas cover can be fitted Art.-No. **63920**.

Notes

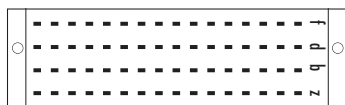
Art.-No. 631195 and 631615 are specially designed for Eberle PLS 509S or Telemecanique TSX 017. Art.-No. 631615 with LED indicators.
¹⁾ Double row terminals on one side row for "a". ²⁾ The T₂ size is for a card without a front plate.

Suitable for eurocards
100 x 160 mm

SKP
form G
64-pole
(DIN 416112)



Form (pin arrangement)



Ordering data

Ordering data		Art.-No.	Art.-No.
No. of poles	Pin config.	screw terminals	spring clamp terminals
64-pole	row z, b, d, f	63040	4000-63011-5406400

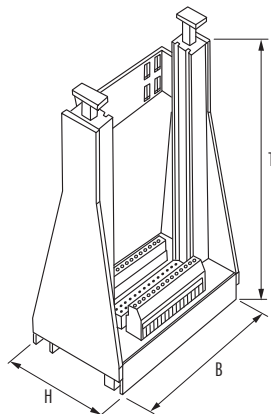
Technical data

Supply voltage	250 V AC
Supply current	max. 3 A
Form of connector (female)	64-pole G to DIN 416112
Wiring method	4 mm ² single wire
Air and creepage distance	(EN 60664-1) cat. I
Mounting method	DIN-rail mounting to EN 60715 or screw fixed
Material	flame retardant plastic
Dimensions H x B x T (T ₂) ²⁾	69 x 140 x 143 (195) mm

Function description

To insert the card first press down the 2 yellow buttons, then slide the card into the guide slots, pushing fully home. The card is then locked into position and can only be removed by pressing again down the 2 yellow buttons.

Dimension drawing



Accessories

Adapter Art.-No. **63900** allows the holder to be mounted at right-angles on the rail.

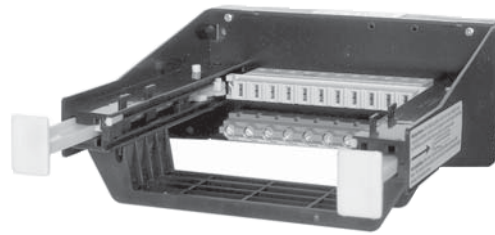
Notes

²⁾The T₂ size is for a card without a front plate.

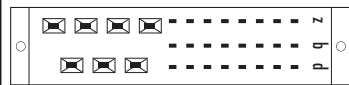
Suitable for eurocards
100 x 160 mm

SKP
form M
24-/7-pole
(DIN 416112)

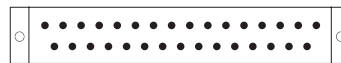
SKP
31-pole
(DIN 41617)



Form (pin arrangement)



for 24- and 7-pole



for 31-pole

Ordering data

		Art.-No.	Art.-No.
No. of poles	Pin config.	spring clamp/screw terminals	spring clamp/screw terminals
31-pole	all		63001
			¹⁾ 63007
			4000-63011-9203100
24+7-pole	row z, b, d	63048	
		4000-63011-6302470	

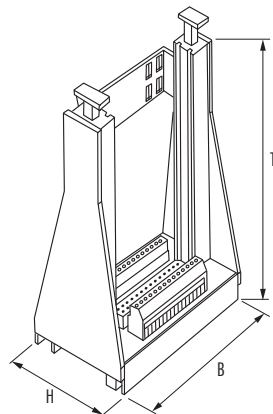
Technical data

Supply voltage	250 V AC (24-pole)/500 V AC (7-pole)	250 V AC
Supply current	max. 4 A (24-pole)/15 A (7-pole)	max. 5 A
Form of connector (female)	24+7-pole M to DIN 416112	31-pole to DIN 41617
Wiring method	4 mm ² single wire	
Air and creepage distance (EN 60664-1)	cat. I	
Mounting method	DIN-rail mounting to EN 60715 or screw fixed	
Material	flame retardant plastic	
Dimensions H x B x T (T ₂) ²⁾	63 x 140 x 143 (210) mm	63 x 140 x 143 (185) mm

Function description

To insert the card first press down the 2 yellow buttons, then slide the card into the guide slots, pushing fully home. The card is then locked into position and can only be removed by pressing again down the 2 yellow buttons.

Dimension drawing



Accessories

Adapter Art.-No. **63900** allows the holder to be mounted at right-angles on the rail.

Notes

- ¹⁾ Connection via one-sided adjusted double row terminals.
²⁾ The T₂ size is for a card without a front plate.