

## AS-Interface System – MASI65

The compact I/O modules in the **MASI65** product range make automation child's play in the handling, assembly and packing areas. The small dimensions of the lightweight modules allow extremely compact machines to be constructed.

Having a bus connection with penetration technology reduces installation costs considerably. The integrated bus distributor function removes the need of additional components for branching the AS-Interface line. Space is saved and the installation becomes better organized.

The **MASI65** product range has AS-Interface-compatible valve connectors for installing individual valves. Installation times are therefore reduced even further, and I/O cables to the valve are not needed.

## Easy to assemble – installed using penetration technology

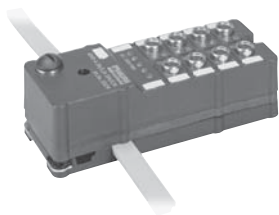
- just one main screw for attaching the module
- cable routing prevents polarity reversal
- prevents wiring errors
- reduces installation and cabling costs

## Flexible installation

- integrated bus distributor function for branching or extending the AS-Interface bus
- saves additional distribution and extension costs
- variable structure and length



## I/O modules

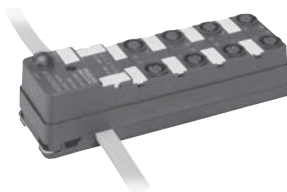


### with M8 connectors and protection IP67

- 4 inputs
- 8 inputs
- 4 outputs
- 4 In- and 4 outputs

from page 2.7.2

MASI65



### with M12 connectors and protection IP67

- 4 inputs
- 8 inputs
- 4 outputs
- 8 outputs
- 4 In- and 4 outputs

from page 2.7.4



### Valve connector in protection IP67

- 1 output
- 2 outputs
- 4 outputs
- 2 In- and 2 outputs

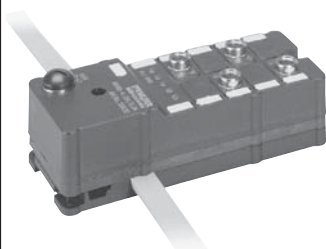
from page 2.7.11

**I/O modules**  
**Inputs via**  
**M8 round plug connector**

**Protection IP67**

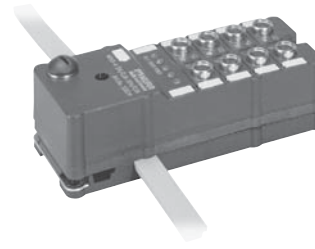
## MASI65 DI4/0.2A AB 4xM8

4 inputs 0.2 A; AB-slave



## MASI65 DI8/0.24A AB 8xM8

8 inputs 0.24 A; AB-slave



Ordering data	Art.-No.	Art.-No.	Art.-No.	Art.-No.
4 digital inputs	<b>55668</b>	<b>55658</b>		
8 digital inputs			<b>55669</b>	<b>55689</b>
Technical data				
AS-Interface Supply voltage	26.5...31.6 V			
AS-Interface current usage	≤ 250 mA		≤ 290 mA	
Addressing	1...62 (1...31 A o. B) via address port, pre-adjusted to address 0		2 x 1...62 (2 x 1...31 A o. B) via address port, pre-adjusted to address 0	
Profile (I0/I1/ID2 code)	S-0.A.0		2 x S-0.A.0	
Bus distribution function	no	yes	no	yes
Inputs				
Numbers of	4		8	
Type	for 3-wire sensors, pnp-switching or mechanical switches			
Input guideline	EN 61131-2			
Sensor supply	≤ 200 mA, short-circuit and overload protected		≤ 240 mA, short-circuit and overload protected	
Short-circuit protection	electronic			
Status indicator	yellow LED per input			
Diagnostic				
green LED/red LED	coded to AS-Interface, specification 2.11 (watchdog, address 0, sensor supply, short-circuit and overload protected)			
General data				
Temperature range	0...+55 °C			
Dimensions	38 x 120 x 48 mm			
Weight	approx. 130 g		approx. 150 g	
Dimension drawing				
Accessories				
M8 blind plug	1 piece		<b>Art.-No. 3858627</b>	
AS-Interface end cap for flat cable	(1 set) 5 pieces left, 5 pieces right		<b>55746</b>	
Notes				
Accessories see chapter 2.10. Connection cables can be found in chapter 1.				

**I/O modules**  
**Inputs/outputs via**  
**M8 round plug connector**

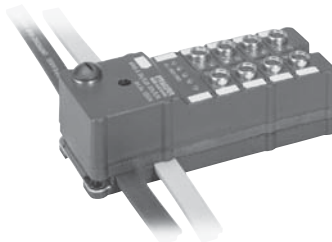
**Protection IP67**

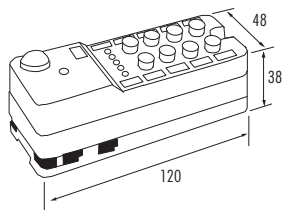
**MASI65 DI4/0.2A DO4/0.5A 8xM8**

4 inputs 0.2 A;  
 4 outputs 0.5 A

**MASI65 DI4/1.6A DO4/0.5A 8xM8**

4 inputs 1.6 A;  
 4 outputs 0.5 A



Ordering data	Art.-No.	Art.-No.
4 digital inputs and outputs	<b>55634</b>	<b>55635</b>
Technical data		
AS-Interface supply voltage	26.5...31.6 V	
AS-Interface current usage	250 mA	40 mA
Addressing	1...31 via address port, pre-adjusted to address 0	
Profile (IO/ID/ID2 code)	S-7.0.E	
Inputs		
Numbers of	4	
Type	for 3-wire sensors, pnp-switching or mechanical switches	
Input guideline	EN 61131-2	
Supply voltage	–	external 24 V DC (20...30 V DC) to DIN 19240
Sensor supply	≤ 200 mA from AS-Interface bus, short-circuit and overload protected	≤ 1.6 A via external 24 V DC supply, short-circuit and overload protected
Short-circuit protection	electronic	
Status indicator	yellow LED per input	
Outputs		
Numbers of	4	
Supply voltage	external 24 V DC (20...30 V DC) to DIN 19240, connection via black AS-Interface flat cable	
Current usage per output	0.5 A, 100 % ED	
Combined current	2 A	
Short-circuit protection	electronic	
Filament lamp load	2 W	
Max. switching frequency	resistive load: 100 Hz; inductive load: 1 Hz	
Status indicator	yellow LED per output	
Diagnostic		
green LED/red LED	coded to AS-Interface, specification 2.11 (watchdog, address 0, sensor supply, short-circuit and overload protected)	
External supply	green LED	
General data		
Temperature range	0...+55 °C	
Dimensions	38 x 120 x 48 mm	
Weight	approx. 150 g	
Dimension drawing		
		
Accessories		
M8 blind plug	1 piece	<b>3858627</b>
AS-Interface end cap for flat cable	(1 set) 5 pieces left, 5 pieces right	<b>55746</b>
Notes		
Accessories see chapter 2.10. Connection cables can be found in chapter 1.		

**I/O modules**  
**Inputs/outputs via**  
**M12 round plug connector**

**Protection IP67**

**MASI65 DI4/0.2A Y 4xM12**  
 4 inputs 0.2 A



**MASI65 DO4/0.5A Y 4xM12**  
 4 outputs 0.5 A



**MASI65 DO4/2A 4xM12**  
 4 outputs 2 A

Ordering data	Art.-No.	Art.-No.	Art.-No.
4 digital inputs	<b>55629</b>		
4 digital outputs		<b>55574</b>	<b>55615</b>
Technical data			
AS-Interface supply voltage	26.5...31.6 V		
AS-Interface current usage	≤ 250 mA	≤ 50 mA	
Addressing	1...31 via address port, pre-adjusted to address 0		
Profile (I0/ID/ID2 code)	S-0.1.F	S-8.1.E	S-8.0.E
Y-wiring	yes	yes	no
Inputs			
Numbers of	4	–	
Type for 3-wire sensors	pnp-switching or mechanical switches	–	
Input guideline	EN 61131-2	–	
Sensor supply from AS-Interface bus	≤ 200 mA, short-circuit and overload protected	–	
Short-circuit protection	electronic	–	
Status indicator	yellow LED per input	–	
Outputs			
Numbers of	–	4	
Supply voltage	–	external 24 V DC (20...30 V DC) to DIN 19240, connection via black AS-Interface flat cable	
Current usage per output	–	0.5 A, 100 % ED, short-circuit and overload protected	2 A, 100 % ED, short-circuit and overload protected
Combined current	–	2 A	4 A
Short-circuit protection	–	electronic	
Filament lamp load	–	2 W	10 W
Max. switching frequency	–	resistive load: 100 Hz; inductive load: 1 Hz	
Status indicator	–	yellow LED per output	
Diagnostic			
green LED/red LED	coded to AS-Interface, specification 2.11 (watchdog, address 0, sensor supply, short-circuit and overload protected)		
External supply	–	green LED	
General data			
Temperature range	0...+55 °C		
Dimensions	105 x 50 x 38 mm		
Weight	approx. 100 g		
Dimension drawing			
Accessories			
M12 blind plug	(1 set) 4 pieces	<b>Art.-No. 55468</b>	
AS-Interface end cap for flat cable	(1 set) 5 pieces left, 5 pieces right	<b>55746</b>	
Notes			
Accessories see chapter 2.10. Connection cables can be found in chapter 1.			

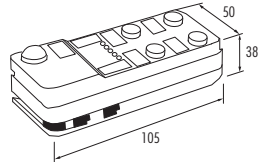
**I/O modules**  
**Inputs/outputs via**  
**M12 round plug connector**

**MASI65 DI2/0.2A DO2/2A 4xM12**

2 inputs 0.2 A  
 2 outputs 2 A

**Protection IP67**



<b>Ordering data</b>		<b>Art.-No.</b>
2 digital inputs and outputs		<b>55625</b>
<b>Technical data</b>		
AS-Interface supply voltage	26.5...31.6 V	
AS-Interface current usage	≤ 250 mA	
Addressing	1...31 via address port, pre-adjusted to address 0	
Profile (IO/ID/ID2 code)	S-3.0.E	
Y-wiring	no	
<b>Inputs</b>		
Numbers of	2	
Type	for 3-wire sensors pnp-switching, or mechanical switches	
Input guideline	EN 61131-2	
Supply voltage	–	
Sensor supply	≤ 200 mA from AS-Interface bus, short-circuit and overload protected	
Short-circuit protection	electronic, short-circuit and overload protected	
Status indicator	yellow LED per input	
<b>Outputs</b>		
Numbers of	2	
Supply voltage	external 24 V DC (20...30 V DC) to DIN 19240, connection via black AS-Interface flat cable	
Current usage per output	2 A, 100 %	
Combined current	4 A	
Short-circuit protection	electronic, short-circuit and overload protected	
Filament lamp load	10 W	
Max. switching frequency	resistive load: 100 Hz; inductive load: 1 Hz	
Status indicator	yellow LED per output	
<b>Diagnostic</b>		
green LED/red LED	coded to AS-Interface, specification 2.11 (watchdog, address 0, sensor supply, short-circuit and overload protected)	
External supply	green LED	
<b>General data</b>		
Temperature range	0...+55 °C	
Dimensions	38 x 105 x 50 mm	
Weight	approx. 100 g	
<b>Dimension drawing</b>		
		
<b>Accessories</b>		<b>Art.-No.</b>
M12 blind plug	(1 set) 4 pieces	<b>55468</b>
AS-Interface end cap for flat cable	(1 set) 5 pieces left, 5 pieces right	<b>55746</b>
<b>Notes</b>	Accessories see chapter 2.10. Connection cables can be found in chapter 1.	

**I/O modules**  
**Inputs via**  
**M12 round plug connector**

**Protection IP67**

## MASI65 DI4/0.2A 4xM12

4 inputs 0.2 A



## MASI65 DI8/0.4A 8xM12

8 inputs 0.4 A



Ordering data	Art.-No.	Art.-No.	Art.-No.	Art.-No.
4 digital inputs	<b>55610</b>	<b>55622</b>		
8 digital inputs			<b>55612</b>	<b>55623</b>

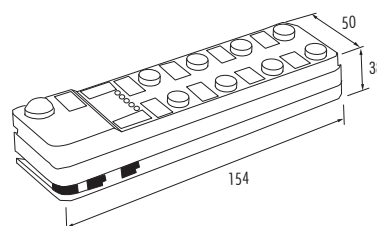
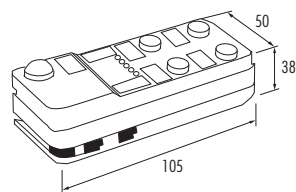
Technical data				
AS-Interface supply voltage	26.5...31.6 V			
AS-Interface current usage	≤ 250 mA		≤ 450 mA	
Addressing	1...31 via address port, pre-adjusted to address 0		2 x 1...31 via address port, pre-adjusted to address 0	
Profile (I0/I1/ID2 code)	S-0.0.F		2 x S-0.0.F	
Y-wiring	no	no	no	no
Bus distribution function	no	yes	no	yes

Inputs				
Numbers of	4		8	
Type	for 3-wire sensors pnp-switching, or mechanical switches			
Input guideline	EN 61131-2			
Sensor supply	≤ 200 mA from AS-Interface bus, short-circuit and overload protected		≤ 400 mA from AS-Interface bus, short-circuit and overload protected	
Short-circuit protection	electronic			
Status indicator	yellow LED per input			

Diagnostic				
green LED/red LED	coded to AS-Interface, specification 2.11 (watchdog, address 0, sensor supply, short-circuit and overload protected)			

General data				
Temperature range	0...+55 °C			
Dimensions	38 x 105 x 50 mm		38 x 154 x 50 mm	
Weight	approx. 100 g		approx. 160 g	

Dimension drawing				
-------------------	--	--	--	--



Accessories				Art.-No.
M12 blind plug	(1 set) 4 pieces			<b>55468</b>
AS-Interface end cap for flat cable	(1 set) 5 pieces left, 5 pieces right			<b>55746</b>

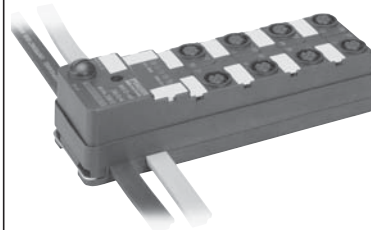
Notes				
Accessories see chapter 2.10. Connection cables can be found in chapter 1.				

**I/O modules**  
**Outputs via**  
**M12 round plug connector**

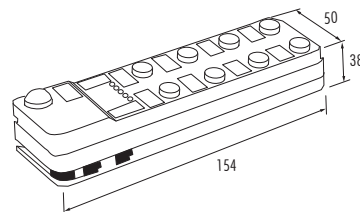
**Protection IP67**

**MASI65 DO8/0.5A 8xM12**

8 outputs 0.5 A



<b>Ordering data</b>		<b>Art.-No.</b>
8 digital outputs		<b>55616</b>
<b>Technical data</b>		
AS-Interface supply voltage	26.5...31.6 V	
AS-Interface current usage	≤ 35 mA	
Addressing	2 x 1...31 via address port, pre-adjusted to address 0	
Profile (IO/ID/ID2 code)	2 x S-8.0.E	
Y-wiring	no	
<b>Outputs</b>		
Numbers of	8	
Supply voltage	external 24 V DC (20...30 V DC) to DIN 19240, connection via black AS-Interface flat cable	
Current usage per output	0.5 A, 100 % ED, short-circuit and overload protected	
Combined current	4 A	
Short-circuit protection	electronic	
Filament lamp load	2 W	
Max. switching frequency	resistive load: 100 Hz; inductive load: 1 Hz	
Status indicator	yellow LED per output	
<b>Diagnostic</b>		
green LED/red LED	coded to AS-Interface, specification 2.11 (watchdog, address 0, sensor supply, short-circuit and overload protected)	
External supply	green LED	
<b>General data</b>		
Temperature range	0...+55 °C	
Dimensions	38 x 154 x 50 mm	
Weight	approx. 160 g	
<b>Dimension drawing</b>		



<b>Accessories</b>		<b>Art.-No.</b>
M12 blind plug	(1 set) 4 pieces	<b>55468</b>
AS-Interface end cap for flat cable	(1 set) 5 pieces left, 5 pieces right	<b>55746</b>
<b>Notes</b>	Accessories see chapter 2.10. Connection cables can be found in chapter 1.	

**I/O modules**  
**Inputs/outputs via**  
**M12 round plug connector**

**Protection IP67**

**MASI65**  
**DI4/0.2A DO4/0.5A 8xM12**

4 inputs 0.2 A  
 4 outputs 0.5 A

**MASI65**  
**DI4/0.2A DO4/2A 8xM12**

4 inputs 0.2 A  
 4 outputs 2 A

**MASI65**  
**DI4/1.6A DO4/2A 8xM12**

4 inputs 1.6 A  
 4 outputs 2 A



Ordering data	Art. No.	Art.-No.	Art.-No.
4 digital input and outputs	<b>55618</b>	<b>55624</b>	<b>55619</b>
Technical data			
AS-Interface supply voltage	26.5...31.6 V		
AS-Interface current usage	≤ 250 mA	≤ 50 mA	
Addressing	1...31 via address port, pre-adjusted to address 0		
Profile (I0/ID/ID2 code)	S-7.0.E		
Y-wiring	no		
Inputs			
Numbers of	4		
Type	for 3-wire, sensors pnp-switching or mechanical switches		
Input guideline	EN 61131-2		
Supply voltage	—	external 24 V DC (20...30 V DC)	
Sensor supply	≤ 200 mA from AS-Interface bus, short-circuit and overload protected	≤ 1.6 A via external supply	
Short-circuit protection	electronic, short-circuit and overload protected		
Status indicator	yellow LED per input		
Outputs			
Numbers of	4		
Supply voltage	external 24 V DC (20...30 V DC) to DIN 19240, connection via black AS-Interface flat cable		
Current usage per output	0.5 A, 100 %	2 A, 100 %	
Combined current	2 A	4 A	
Short-circuit protection	electronic, short-circuit and overload protected		
Filament lamp load	2 W	10 W	
Max. switching frequency	resistive load: 100 Hz; inductive load: 1 Hz		
Status indicator	yellow LED per output		
Diagnostic			
green LED/red LED	coded to AS-Interface, specification 2.11 (watchdog, address 0, sensor supply, short-circuit and overload protected)		
External supply	green LED		
General data			
Temperature range	0...+55 °C		
Dimensions	38 x 154 x 50 mm		
Weight	approx. 160 g		
Dimension drawing			
Accessories			
M12 blind plug	(1 set) 4 pieces	<b>Art.-No. 55468</b>	
AS-Interface end cap for flat cable	(1 set) 5 pieces left, 5 pieces right	<b>Art.-No. 55746</b>	
Notes			
Accessories see chapter 2.10. Connection cables can be found in chapter 1.			



**I/O modules**  
**Inputs/outputs via**  
**M12 round plug connector**

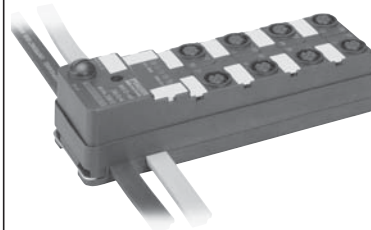
**Protection IP67**

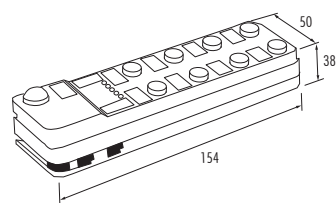
**MASI65 DI4/0.2A DO4/2A Y 8xM12**

4 inputs 0.2 A  
 4 outputs 2 A

**MASI65 DI4/0.2A DO4/0.5A Y 8xM12**

4 inputs 0.2 A  
 4 outputs 0.5 A



Ordering data	Art.-No.	Art.-No.
4 digital inputs and outputs	55571	55628
Technical data		
AS-Interface supply voltage	26.5...31.6 V	
AS-Interface current usage	≤ 250 mA	
Addressing	1...31 via address port, pre-adjusted to address 0	
Profile (IO/ID/ID2 code)	S-7.F.E	
Y-wiring	yes	
Inputs		
Numbers of	4	
Type	for 3-wire sensors, pnp-switching or mechanical switches	
Input guideline	EN 61131-2	
Supply voltage	-	
Sensor supply	≤ 200 mA from AS-Interface bus, short-circuit and overload protected	
Short-circuit protection	electronic, short-circuit and overload protected	
Status indicator	yellow LED per input	
Outputs		
Numbers of	4	
Supply voltage	external 24 V DC (20...30 V DC) to DIN 19240, connection via black AS-Interface flat cable	
Current usage per output	2 A, 100 %	0.5 A, 100 %
Combined current	4 A	2 A
Short-circuit protection	electronic	
Filament lamp load	2 W	
Max. switching frequency	resistive load: 100 Hz	
Status indicator	yellow LED per output	
Diagnostic		
green LED/redLED	coded to AS-Interface, specification 2.11 (watchdog, address 0, sensor supply, short-circuit and overload protected)	
External supply	green LED	
General data		
Temperature range	0...+55 °C	
Dimensions	38 x 154 x 50 mm	
Weight	approx. 160 g	
Dimension drawing		
		
Accessories		
M12 blind plug	(1 set) 4 pieces	55468
AS-Interface end cap for flat cable	(1 set) 5 pieces left, 5 pieces right	55746
Notes		
Accessories see chapter 2.10. Connection cables can be found in chapter 1.		

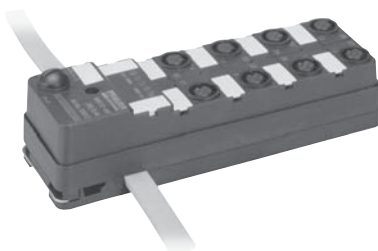
**I/O modules**  
**Inputs via**  
**M12 round plug connector**

**AB-slave**

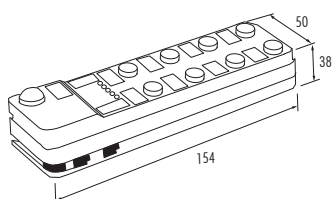
**Protection IP67**

## MASI65 DI8/0.2A AB Y 8xM12

8 inputs 0.2 A; AB-slave



<b>Ordering data</b>		<b>Art.-No.</b>
8 digital inputs		55676
<b>Technical data</b>		
AS-Interface supply voltage	26.5...31.6 V	
AS-Interface current usage	≤ 250 mA	
Addressing	2 x 1...62 (2 x 1...31 A or B) via address port, pre-adjusted to address 0	
Profile (I0/ID/ID2 code)	2 x S-0.A.2	
Y-wiring	yes	
Bus distribution function	no	
<b>Inputs</b>		
Numbers of	8	
Type	for 3-wire sensors, pnp-switching or mechanical switches	
Input guideline	EN 61131-2	
Sensor supply	≤ 200 mA/max. 240 mA possible from AS-Interface bus, short-circuit and overload protected	
Short-circuit protection	electronic	
Status indicator	yellow LED per input	
<b>Diagnostic</b>		
green LED/red LED	coded to AS-Interface, specification 2.11 (watchdog, address 0, sensor supply, short-circuit and overload protected)	
<b>General data</b>		
Temperature range	0...+55 °C	
Dimensions	154 x 50 x 38 mm	
Weight	approx. 160 g	
<b>Dimension drawing</b>		



<b>Accessories</b>		<b>Art.-No.</b>
M12 blind plug	(1 set) 4 pieces	55468
AS-Interface end cap for flat cable	(1 set) 5 pieces left, 5 pieces right	55746
<b>Notes</b>	Accessories see chapter 2.10. Connection cables can be found in chapter 1.	

**I/O modules**  
**Inputs/outputs via**  
**M12 round plug connector**

**AB-slave**

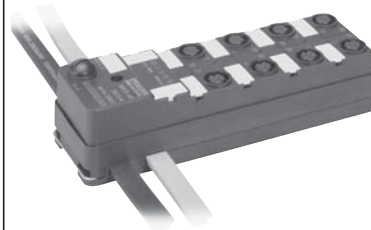
**Protection IP67**

**MASI65 DI4/0.15A DO3/2A AB Y 7xM12**

4 inputs 0.15 A  
 3 outputs 2 A; AB-slave

**MASI65 DI4/1.6A DO3/2A AB Y 7xM12**

4 inputs 1.6 A  
 3 outputs 2 A; AB-slave



<b>Ordering data</b>	<b>Art.-No.</b>	<b>Art.-No.</b>
4 digital inputs/3 digital outputs	<b>55675</b>	<b>55677</b>
<b>Technical data</b>		
AS-Interface supply voltage	26.5...31.6 V	
AS-Interface current usage	≤ 200 mA	≤ 50 mA
Addressing	1...62 (1...31 A or B) via address port, pre-adjusted to address 0	
Profile (IO/ID/ID2 code)	S-7.A.2	
Y-wiring	yes	
<b>Inputs</b>		
Numbers of	4	
Type	for 3-wire sensors, pnp-switching or mechanical switches	
Input guideline	EN 61131-2	
Supply voltage	–	external 24 V DC (20...30 VDC)
Sensor supply	≤ 150 mA from AS-Interface bus, short-circuit and overload protected	≤ 1.6 A via external supply
Short-circuit protection	electronic, short-circuit and overload protected	
Status indicator	yellow LED per input	
<b>Outputs</b>		
Numbers of	3	
Supply voltage	external 24 V DC to DIN 19240, connection via black AS-Interface flat cable	
Current usage per output	2 A, 100 %	
Combined current	4 A	
Short-circuit protection	electronic, short-circuit and overload protected	
Filament lamp load	10 W	
Max. switching frequency	resistive load: 100 Hz; inductive load: 1 Hz	
Status indicator	yellow LED per output	
<b>Diagnostic</b>		
green LED/red LED	coded to AS-Interface, specification 2.11 (watchdog, address 0, sensor supply, short-circuit and overload protected)	
External supply	green LED	
<b>General data</b>		
Temperature range	0...+55 °C	
Dimensions	154 x 50 x 38 mm	
Weight	approx. 160 g	
<b>Dimension drawing</b>		
<b>Accessories</b>		
M12 blind plug	(1 set) 4 pieces	<b>Art.-No. 55468</b>
AS-Interface end cap for flat cable	(1 set) 5 pieces left, 5 pieces right	<b>55746</b>
<b>Notes</b>		
Accessories see chapter 2.10. Connection cables can be found in chapter 1.		

**I/O modules**  
**Inputs/outputs via**  
**M12 round plug connector**  
**and form A**

**DIN 43650**

**Protection IP67**

**MASI65**  
**DI2/0.2A DO2/2A VA**

2 inputs 0.2 A  
 2 outputs 2 A

**MASI65**  
**DO2/2A VA**

2 outputs 2 A

**MASI65**  
**DO1/2A VA**

1 output 2 A

**MASI65**  
**DO4/1A VA**

4 outputs 1 A



Ordering data	Art.-No.	Art.-No.	Art.-No.	Art.-No.
2 digital inputs/outputs	<b>55680</b>			
2 digital outputs		<b>55681</b>		
1 digital output			<b>55682</b>	
4 digital outputs				<b>55683</b>

Technical data	
AS-Interface supply voltage	26.5...31.6 V
AS-Interface current usage	≤ 250 mA      ≤ 50 mA
Addressing	1...31 via address port, pre-adjusted to address 0
Profile (IO/ID/ID2 code)	S-3.F.E      S-8.F.E
Pin spacing	18 mm

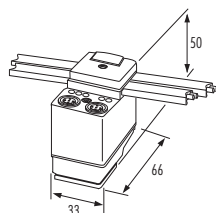
Inputs	
Numbers of	2      –
Connection	1 and 2 on M12      –
Type	for 3-wire sensors, pnp-switching or mechanical switches
Input guideline	EN 61131-2
Supply voltage	–
Sensor supply	≤ 200 mA from AS-Interface bus, short-circuit and overload protected
Short-circuit protection	electronic, short-circuit and overload protected

Outputs	
Numbers of	2      2      1      4
Connection	out 1 valve form A, out 2 on M12      out 1 valve form A, out 2 on M12      out 1 form A      out 1 form A, out 2, 3, 4 M12
Supply voltage	external 24 V DC (20...30 V DC) to DIN 19240, connection via black AS-Interface flat cable
Current usage per output	2 A, 100 %      1 A, 100 %
Combined current	2 A (only 1 output active)      4 A
Short-circuit protection	electronic, short-circuit and overload protected
Filament lamp load	2 W      –
Status indicator	yellow LED per output

Diagnostic	
green LED/red LED	coded to AS-Interface, specification 2.11 (watchdog, address 0, sensor supply, short-circuit and overload protected)
External supply	yellow LED

General data	
Temperature range	-20...+70 °C
Dimensions	50 x 33 x 66 mm
Weight	approx. 80 g

**Dimension drawing**



Accessories	Art.-No.
M12 blind plug	(1 set) 4 pieces <b>55468</b>
AS-Interface end cap for flat cable	(1 set) 5 pieces left, 5 pieces right <b>55746</b>

**Notes**  
 Accessories see chapter 2.10. Connection cables can be found in chapter 1.

**I/O modules**  
**Inputs/outputs via**  
**M12 round plug connector**  
**and form BI**

**DIN 43650**

**Protection IP67**

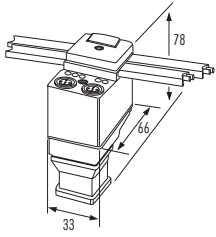
**MASI65 DI2/0.2A DO2/2A VBI**

2 inputs 0.2 A  
 2 outputs 2 A

**MASI65 DO1/2A VBI**

1 output 2 A



Ordering data	Art.-No.	Art.-No.
2 digital inputs and outputs	<b>556613</b>	
1 digital output		<b>556614</b>
Technical data		
AS-Interface supply voltage	26.5...31.6 V	
AS-Interface current usage	≤ 250 mA	≤ 50 mA
Addressing	1...31 via address port, pre-adjusted to address 0	
Profile (I0/ID/ID2 code)	S-3.F.E	S-8.F.E
Pin spacing	11 mm	
Inputs		
Numbers of	2	–
Connection	1 and 2 on M12	–
Type	for 3-wire sensors, pnp-switching or mechanical switches	
Input guideline	EN 61131-2	
Supply voltage	–	
Sensor supply	≤ 200 mA from AS-Interface bus, short-circuit and overload protected	
Short-circuit protection	electronic, short-circuit and overload protected	
Outputs		
Numbers of	2	1
Connection	out 1 valve form BI, out 2 on M12	out 1 form BI
Supply voltage	external 24 V DC (20...30 V DC) to DIN 19240, connection via black AS-Interface flat cable	
Current usage per output	2 A, 100 %	
Combined current	2 A (only 1 output active)	
Short-circuit protection	electronic, short-circuit and overload protected	
Filament lamp load	2 W	
Status indicator	yellow LED per output	
Diagnostic		
green LED/red LED	coded to AS-Interface, specification 2.11 (watchdog, address 0, sensor supply, short-circuit and overload protected)	
External supply	yellow LED	
General data		
Temperature range	-20...+70 °C	
Dimensions	69 x 33 x 66 mm	
Weight	approx. 95 g	
Dimension drawing		
		
Accessories		Art.-No.
M12 blind plug	(1 set) 4 pieces	<b>55468</b>
AS-Interface end cap for flat cable	(1 set) 5 pieces left, 5 pieces right	<b>55746</b>
Notes		
Accessories see chapter 2.10. Connection cables can be found in chapter 1.		

MASI65