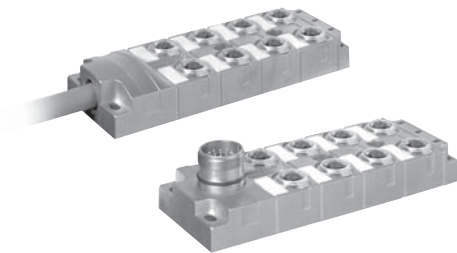


Distribution box M12 for rough environments



MVP12 Metal

4-, 8-way

with pre-wired cable, shielded or unshielded
with plug connector M23

MVP12 Metal DIAGNOSTIC

8-way

with pre-wired cable
current monitor and diagnostics

from 1.12.1

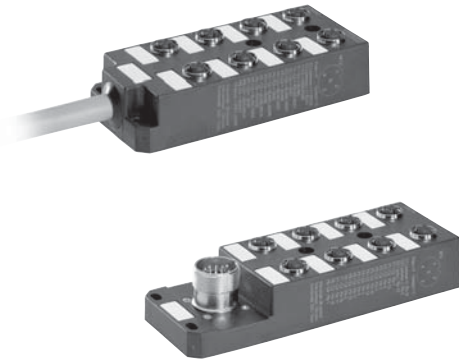


M12 Potted logic distributor

4-, 8-way

with plug connector M12
pre-connection of sensors

from 1.12.4



M12 Potted to CNOMO guideline

4-, 6-, 8-way

with pre-wired cable
with plug connector M23

from 1.12.5



M12 Potted

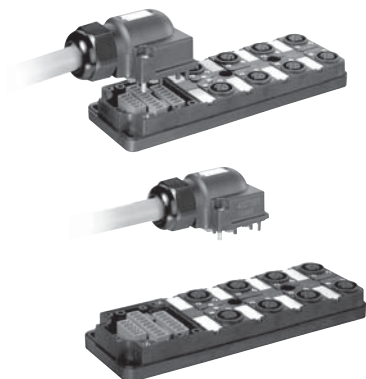
4-, 6-, 8-way

with pre-wired cable

from 1.12.6

Distribution box M12

for general applications



MVP12

4-, 6-, 8-way

with pluggable connection cable,
with pre-wired cable

MVP12 connection cap

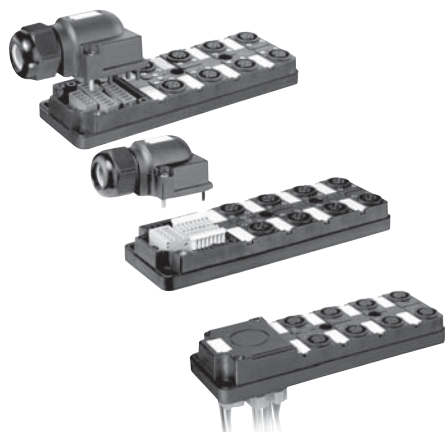
with pre-wired cable
with screw terminals

MVP12 basic housing

4-, 6-, 8-way

with potential separation

from 1.12.7



MVP12

4-, 6-, 8-way

with pluggable connection cap and screw-plug terminals

MVP12 FK

4-, 6-, 8-way

with spring clamp terminals

MVP12

8-way

with back plate connection
(field-wireable or single wires)

from 1.12.9



MVP12

4-, 6-, 8-way

with plug connector M23
with front faced plug connector M23

MVP12 UNIVERSAL

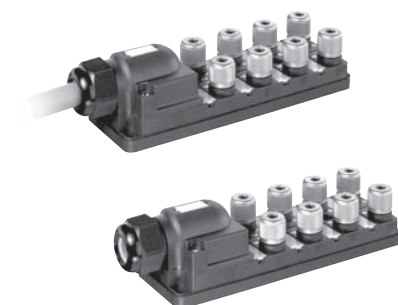
4-way

with pluggable connection cap and screw-plug terminals
seperation contact via pluggable jumpers

from 1.12.12

Distribution box

in quick connection technology



MVP12

4-, 6-, 8-way

Quick connection technology

with pluggable connection cable
with pluggable connection cap and screw-plug terminals

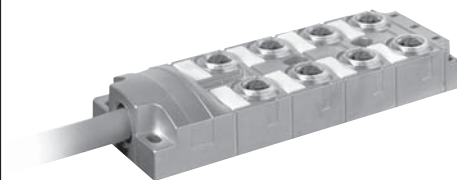
page 1.12.14

Distribution box for sensors and actuators

- with pre-wired cable
- suitable for drag chains,
halogen free
- unshielded or shielded
- for digital or analog
signals

MVP12 Metal

4-way, 8-way
with pre-wired cable



Approvals: 

Contact layout

General:

Contact 1: (+)
Contact 2: (N/C)/(S2)
Contact 3: (–)
Contact 4: (N/O)/(S1)
Contact 5: (PE)
Shielding: M12 threaded sleeve

M12 female
5-pole



with LED

for digital PNP-signals 24 V DC

without LED

for analog signals or nominal voltage up to 125 V AC/DC

Distribution box 4-way

connection cable, unshielded	cable length
PUR (UL/CSA-listed)	3.0 m
8 x 0.5/3 x 1 mm ²	5.0 m
	10.0 m
	15.0 m

Art.-No.

Art.-No.

27471

27476

27472

27477

27473

27478

27474

27479

Distribution box 8-way

connection cable, unshielded	cable length
PUR (UL/CSA-listed)	3.0 m
16 x 0.5/3 x 1 mm ²	5.0 m
	10.0 m
	15.0 m

Art.-No.

Art.-No.

27491

27496

27492

27497

27493

27498

27494

27499

with potential separation
left/right page ¹⁾

PUR (UL/CSA-listed)	3.0 m
16 x 0.34/5 x 0.75 mm ²	5.0 m
	10.0 m
	15.0 m

27521

27522

27523

27524

Distribution box 4-way shielded

connection cable	cable length
PUR (UL/CSA-listed)	3.0 m
8 x 0.34/3 x 0.75 mm ²	5.0 m
	10.0 m
	15.0 m

Art.-No.

Art.-No.

27481

27486

27482

27487

27483

27488

27484

27489

Distribution box 8-way shielded

connection cable	cable length
PUR (UL/CSA-listed)	3.0 m
16 x 0.34/3 x 0.75 mm ²	5.0 m
	10.0 m
	15.0 m

Art.-No.

Art.-No.

27511

27516

27512

27517

27513

27518

27514

27519

Accessories

page 1.12.2

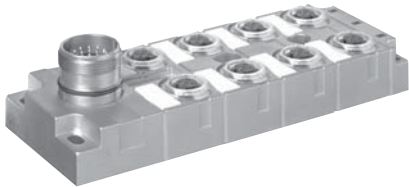
Notes

¹⁾ Sockets 1, 3, 5, 7 or 2, 4, 6, 8 may vary.
Other versions on request. Technical data in chapter 1.3.

Distribution box
for sensors and actuators

- with 19-pole
plug connector M23
- suitable for unshielded or
shielded cables
- for digital or analog
signals

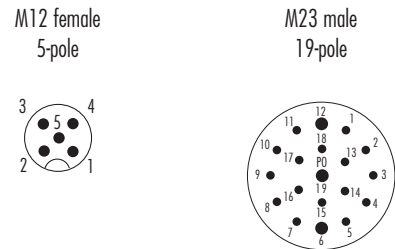
MVP12 Metal
4-way, 8-way
with plug connector M23



Approvals: 

Contact layout

General:
Contact 1: (+)
Contact 2: (N/C)/(S2)
Contact 3: (–)
Contact 4: (N/O)/(S1)
Contact 5: (PE)
Shielding: M12 threaded sleeve
M23 outer thread



with LED
for digital PNP-signals 24 V DC

without LED
for analog signals or nominal voltage up to 125 V AC/DC

Ordering data		Art.-No.	Art.-No.
Distribution box 4-way		27530	27531
Distribution box 4-way		27533	
Distribution box 8-way		27535	27536
Accessories			Art.-No.
Blind plug for empty sockets		metal, hexagon, shielded	996049
Blind plug for empty sockets		plastic	58627
Protective conductor connection set		cable fork 1.5...2.5 mm², screw, washer and lock washer	996064
V2A-base plate	4-way	for back plated EMC-protection, with fixing bolts	996065
	8-way	for back plated EMC-protection, with fixing bolts	996066
Label plates		2 strips = 10 pieces, (Murrplastik KES 20 x 8)	996067
Snap foot for DIN-rail		with fixing bolts, plastic	27905
Female connector M23 19-pole		chapter 1.6	

Notes

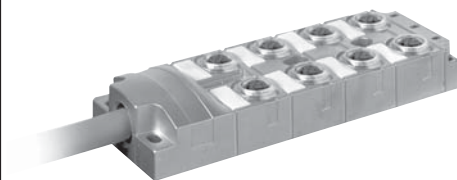
Other versions on request.
Technical data from 1.3. onwards.

Diagnostic distributor for sensors and actuators

- integrated current monitoring
- electronic diagnostics with ERROR-LED
- with pre-wired cable
- suitable for drag chains halogen free

MVP12 Metal DIAGNOSTIC

8-way
with pre-wired cable



Contact layout

General:

Contact 1: (+)
Contact 2: (N/C)/(S2)
Contact 3: (–)
Contact 4: (N/O)/(S1)
Contact 5: (PE)

M12 female
5-pole



with LED for PNP-signals 24 V DC

Current range 0.5 A per port
for sensors and small valves

Current range 2 A per port
for hydraulic valves

Ordering data		Art.-No.	Art.-No.
with potential separation 0 V	5.0 m	27500	27590
PUR (UL/CSA)	10.0 m	27501	27591
16 x 0.34/5 x 0.75 mm ²	15.0 m	27502	27592

Technical data

Nominal voltage 24 V DC (18...30.2 V DC), potential separation 0 V for left/right side

Current usage module max. 35 mA

Diagnostics output "active high", max. 25 mA loaded, wire "brown 2"

M12 male

Max. nominal current via contact 3 (0 V) 0.5 A (switch-off 0.7...0.9 A) 2 A (switch-off 2.3...2.7 A)

Switchable capacity max. 1470 µF

Short-circuit protection and overload pulse switch

Required power supply unit ≥ 10 A ≥ 20 A

General data

Indicator module green LED: P1 and P2; red LED: ERROR for optical diagnostics

M12 port yellow LED: contact 4 and 2, interference: 2 x red LED

Temperature range -20...+60 °C

Protection IP65 and IP67, when plugged and screwed down

Description

All M12 plug positions are current monitored, and are switched off in case of a overload or short-circuit (self-resetting). Supply voltage remains the same. In case of a fault the DIAGNOSTIC signal drops from 24V DC to 0V. When the input to the PLC has been evaluated, and sensors/actuators are found to be defective or the installation damaged, the system or machine can be switched off or shut down immediately.

- stagnation time will be minimized
- error can be localized easily through "ERROR"LED and red LEDs at even M12 socket

Accessories

page 1.12.2

Notes

Other versions e.g. with M23 connector on request.
Technical data in chapter 1.3.

Logic distributor for sensors

- with plug connector M12
- logical function via DIP switch

M12 Potted Logical

4-way, 8-way



Contact layout

M12 female:

- Contact 1: (+)
Contact 2: (N/C)/(S2)
Contact 3: (–)
Contact 4: (N/O)/(S1)
Contact 5: (PE)

M12 male
5-pole



M12 female
5-pole



Ordering data

Distribution box 4-way, 5-pole

Art.-No.

276477

Distribution box 8-way, 4-pole or Y-function

Art.-No.

276247

Technical data

Nominal voltage	24 V DC (10...30 V DC)
Current per contact	max. 35 mA
Power supply sensor (contact 1)	max. 800 mA short-circuit and overload protected
Max. output current M12 male	400 mA
Output protection	< 700 mA short-circuit and overload protected

General data

Indicator	green LED: output S2 and input "reset" (sockets 1, 3, 5, 7); yellow LED: output S4 and input "feed" (sockets 2, 4, 6, 8); red LED: input voltage
Temperature range	-10...+50 °C
Protection	IP67, when plugged and screwed down

Description

Sensors are electrically combined in the distributor and being lead as a whole to the control via an M12 cable. Logical function 1 x 8 AND/NOR, 2 x 4 AND, 2 x 4 XOR can be chosen via DIP-switch. Not used M12 female can be switched off. Pre-connection reduces cable cost, PLC-input, as well as program cycle time.

4-way distribution box, M12 female (2 signals each port) for double assignment

8-way distribution box, M12 female, Y-function for double assignment:

- 5-pole (2 signals each port) sockets 1, 3, 5 and 7 needs to be sealed with a protection cap
- 4-pole (1 signal each port)

Accessories

page 1.12.5

Notes

Manual Art.-No. 276584.
Technical data in chapter 1.3.

Distribution box for sensors and actuators

- with pre-wired cable
- with 19-pole plug connector M23

M12 Potted

4-way, 6-way, 8-way
with pre-wired cable



M12 Potted

4-way, 6-way, 8-way
with plug connector M23



Contact layout

General:

- Contact 1: (+)
Contact 2: (N/C)/(S2)
Contact 3: (–)
Contact 4: (N/O)/(S1)
Contact 5: (PE)

without LED

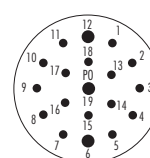
M12 female
5-pole



M12 female
5-pole



M23 male
19-pole



Distribution box 4-way		Art.-No.	Art.-No.	Art.-No.
connection cable	cable length	PUR CNOMO	PVC CNOMO	
	5.0 m	276839	276056	
8 x 0.34/3 x 1.0 mm ²	10.0 m	276840	276055	
	15.0 m	276841	276309	
plug connector M23				276315
Distribution box 6-way		Art.-No.	Art.-No.	Art.-No.
connection cable	cable length	PUR CNOMO	PVC CNOMO	
	5.0 m	276842	276460	
12 x 0.34/3 x 1.0 mm ²	10.0 m	276843	276461	
	15.0 m	276844	276462	
plug connector M23				276459
Distribution box 8-way		Art.-No.	Art.-No.	Art.-No.
connection cable	cable length	PUR CNOMO	PVC CNOMO	
	5.0 m	276845	276058	
16 x 0.34/3 x 1.0 mm ²	10.0 m	276846	276057	
	15.0 m	276847	276311	
plug connector M23				276314
Accessories				Art.-No.
Blind plug for empty sockets		plastic		58627
Snap foot for DIN-rail		with fixing bolts		27905
Label plate		1 piece, (Murrplastik KSS 20 x 9)		90900
Female connector M23	cable length		PUR CNOMO	PVC CNOMO
19-pole	5.0 m		276833	276390
16 x 0.34/3 x 1.0 mm ²	10.0 m		276834	276391
for distribution box 8-way	15.0 m		276835	276392

Notes

Other versions on request.
Technical data chapter 1.3.

Distribution box for sensors and actuators

– with pre-wired cable

M12 Potted

4-way, 6-way, 8-way
with pre-wired cable



Approvals: 

Contact layout

General:

Contact 1: (+)
Contact 2: (N/C)/(S2)
Contact 3: (–)
Contact 4: (N/O)/(S1)
Contact 5: (PE)

M12 female
4-pole



M12 female
5-pole



Distribution box 4-way		Art.-No.	Art.-No.
connection cable	cable length		
PUR/PVC	3.0 m	27857	27832
4 x or 8 x 0.34/	5.0 m	27858	27833
3 x 0.75 mm ²	10.0 m	27859	27834
	15.0 m	27860	27835
Distribution box 6-way		Art.-No.	Art.-No.
connection cable	cable length		
PUR/PVC	3.0 m	27861	27842
6 x or 12 x 0.34/	5.0 m	27862	27843
3 x 0.75 mm ²	10.0 m	27863	27844
	15.0 m	27864	27845
Distribution box 8-way		Art.-No.	Art.-No.
connection cable	cable length		
PUR/PVC	1.0 m		
8 x or 16 x 0.34/	3.0 m	27865	27852
3 x 0.75 mm ²	5.0 m	27866	27853
	10.0 m	27867	27854
	15.0 m	27868	27855
Accessories			Art.-No.
Blind plug for empty sockets	plastic		58627
Snap foot for DIN-rail	with fixing bolts		27905
Label plate	1 pieces, (Murrplastik KSS 20 x 9)		90900
Female connector M23	19-pole	chapter 1.6.	

Notes

Other versions on request.
Technical data in chapter 1.3.

Distribution box for sensors and actuators

- with plugged connection cable
- with pre-wired cable
- potential separation via pluggable jumpers

Approvals: 

MVP12

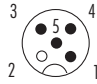
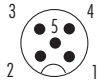
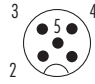
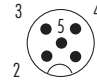
4-way, 6-way, 8-way
with plugged connection cable



MVP12

8-way
with pre-wired cable



Contact layout				
General:	M12 female 4-pole	M12 female 5-pole	M12 female 5-pole	M12 female 5-pole
Contact 1: (+)				
Contact 2: (N/C)/(S2)				
Contact 3: (-)				
Contact 4: (N/O)/(S1)				
Contact 5: (PE)				
with LED for PNP-signals 24 V DC			with potential separation	
Distribution box 4-way		Art.-No.	Art.-No.	Art.-No.
connection cable	cable length			
PUR/PVC	3.0 m	27011	27025	27071
4 x or 8 x 0.34/	5.0 m	27012	27026	27072
3 x or 5 x 0.75 mm ²	10.0 m	27013	27027	27073
	15.0 m	27014	27028	27074
Distribution box 6-way		Art.-No.	Art.-No.	Art.-No.
connection cable	cable length			
PUR/PVC	3.0 m	27015	27031	27075
6 x or 12 x 0.34/	5.0 m	27016	27032	27076
3 x or 5 x 0.75 mm ²	10.0 m	27017	27033	27077
	15.0 m	27018	27034	27078
Distribution box 8-way		Art.-No.	Art.-No.	Art.-No.
connection cable	cable length			
PUR/PVC	3.0 m	27021	27035	27081
8 x or 16 x 0.34/	5.0 m	27022	27036	27082
3 x 0.75 mm ²	10.0 m	27023	27037	27083
	15.0 m	27024	27038	27084
Accessories		Art.-No.		
Blind plug for empty sockets	plastic	58627		
Snap foot for DIN-rail	with fixing bolts	27905		
Label plates	2 strips = 12 pieces, (Murrplastik ABB 17 x 9 type M)	996050		
Coding elements for screw-plug terminals	for 6 codings	996054		
Adapter	M12/M8	7000-42201-0000000		

Notes

Other versions on request.
Technical data in chapter 1.3.

Distribution box for sensors and actuators

Single components

- potential separation via pluggable jumpers

Approvals: 

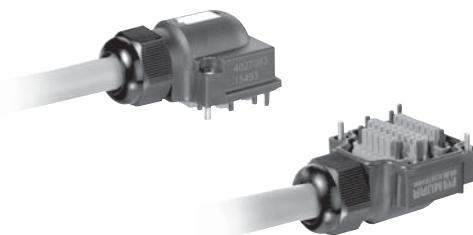
MVP12 basic housing

4-way, 6-way, 8-way
with potential separation



MVP12 connection cap

with and without pre-wired cable



Contact layout

General:

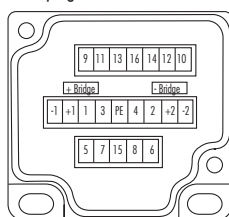
Contact 1: (+)
Contact 2: (N/C)/(S2)
Contact 3: (–)
Contact 4: (N/O)/(S1)
Contact 5: (PE)

LED-Indicator for 24 V DC

M12 female
5-pole



screw-plug terminals max. 1.5 mm²/AWG 16



Ordering data		Art.-No.	Art.-No.	Art.-No.	Art.-No.	Art.-No.	Art.-No.
		4-way	6-way	8-way	4-way	6-way	8-way
Basic housing	for PNP-signals	27114	27115	27116			
Basic housing	for NPN-signals	276563		276565			
Basic housing	without LED	276576	276577	276596			
Connection cap without cable					Art.-No.	Art.-No.	Art.-No.
Connection cap with screw-plug terminals					4127775	4127775	4127775
Connection cap with cable		for 4-way distribution box, 5-pole			Art.-No.	Art.-No.	Art.-No.
PUR/PVC	3.0 m				4027025		
8 x 0.34/3 x 0.75 mm ²	5.0 m				4027026		
without potential separation	10.0 m				4027027		
	15.0 m				4027028		
PUR/PVC	3.0 m				4027071		
8 x 0.34/5 x 0.75 mm ²	5.0 m				4027072		
with potential separation	10.0 m				4027073		
	15.0 m				4027074		
Connection cap with cable		for 6-way distribution box, 5-pole			Art.-No.	Art.-No.	Art.-No.
PUR/PVC	3.0 m					4027031	
12 x 0.34/3 x 0.75 mm ²	5.0 m					4027032	
without potential separation	10.0 m					4027033	
	15.0 m					4027034	
PUR/PVC	3.0 m					4027075	
12 x 0.34/5 x 0.75 mm ²	5.0 m					4027076	
with potential separation	10.0 m					4027077	
	15.0 m					4027078	
Connection cap with cable		for 8-way distribution box, 5-pole			Art.-No.	Art.-No.	Art.-No.
PUR/PVC	3.0 m						4027035
16 x 0.34/3 x 0.75 mm ²	5.0 m						4027036
without potential separation	10.0 m						4027037
	15.0 m						4027038
PUR/PVC	3.0 m						4027081
16 x 0.34/5 x 0.75 mm ²	5.0 m						4027082
with potential separation	10.0 m						4027083
	15.0 m						4027084

Notes

Technical data in chapter 1.3.

Distribution box for sensors and actuators

- with screw-plug terminals for field wiring
- potential separation via pluggable jumpers

MVP12

4-way, 6-way, 8-way
with pluggable connection cap
with potential separation



Approvals: 

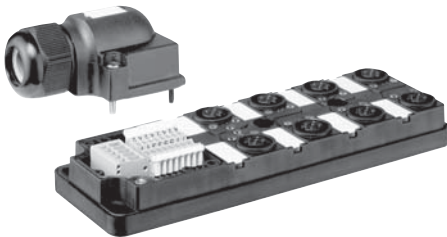
Contact layout			
General:			
Contact 1: (+)			
Contact 2: (N/C)/(S2)			
Contact 3: (-)			
Contact 4: (N/O)/(S1)			
Contact 5: (PE)			
with LED for PNP-signals 24 V DC			
Ordering data		Art.-No.	Art.-No.
Distribution box 4-way		27776	27773
Distribution box 6-way		27777	27774
Distribution box 8-way		27778	27775
Accessories		Art.-No.	
Blind plug for empty sockets		plastic	58627
Snap foot for DIN-rail		with fixing bolts	27905
Label plates		2 strips = 12 pieces, (Murrplastik ABB 17 x 9 type M)	996050
Coding elements for screw-plug terminals		for 6 codings	996054
Adapter M12/M8		connection of M8 male 3-pol. to M12 sockets	7000-42201-0000000

Notes	Technical data in chapter 1.3.
-------	--------------------------------

Distribution box
for sensors and actuators

- with spring clamp terminals
for field wiring

MVP12 FK
4-way, 6-way, 8-way
with connection cap



Approvals: 

Contact layout

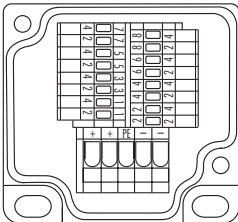
General:

- Contact 1: (+)
- Contact 2: (N/C)/(S2)
- Contact 3: (–)
- Contact 4: (N/O)/(S1)
- Contact 5: (PE)

M12 female
5-pole



spring clamp terminals max. 0.5/1.5 mm² (AWG 20/AWG 16)



with LED for PNP-signals 24 V DC

Ordering data				Art.-No.
Distribution box 4-way				27797
Distribution box 6-way				27798
Distribution box 8-way				27799
Accessories				Art.-No.
Blind plug for empty sockets		plastic		58627
Snap foot for DIN-rail		with fixing bolts		27905
Label plates		2 strips = 12 pieces, (Murrplastik ABB 17 x 9 type M)		996050
Cable 50 m ring	application 4-pole	4-way	4 x 0.34/3 x 0.75mm²	90700
		6-way	6 x 0.34/3 x 0.75mm²	90701
		8-way	8 x 0.34/3 x 0.75mm²	90702
Cable 50 m ring	application 5-pole	4-way	8 x 0.34/3 x 0.75mm²	90703
		6-way	12 x 0.34/3 x 0.75mm²	90704
		8-way	16 x 0.34/3 x 0.75mm²	90705

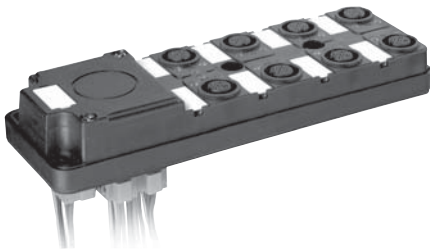
Notes

Technical data in chapter 1.3.

Distribution box for sensors and actuators

- with back plate connection (field-wireable or single wires)
- potential separation via pluggable jumpers
- flat gasket supplied

MVP12
8-way
for direct mounting on control panels



Contact layout

General:

Contact 1: (+)
Contact 2: (N/C)/(S2)
Contact 3: (-)
Contact 4: (N/O)/(S1)
Contact 5: (PE)

M12 female
5-pole



with LED for PNP-signals 24 V DC

Distribution box 8-way		Art.-No.	with potential separation	Art.-No.
Single wires	length			
PUR	1.0 m	27146		27151
16 x 0.34/	3.0 m	27148		27153
3 x or 5 x 0.75 mm ²	5.0 m	27149		
Field-wireable max. 1.5 mm ² /AWG 16				27158
Accessories				Art.-No.
Blind plug for empty sockets	plastic			58627
Label plates	2 strips = 12 pieces, (Murrplastik ABB 17 x 9 type M)			996050
Coding elements for screw-plug terminals	for 6 codings			996054
Adapter	M12/M8	connection of M8 male 3-pole to M12 sockets		7000-42201-0000000

Notes

Technical data in chapter 1.3.

Distribution box for sensors and actuators

- with 12- or 19-pole
plug connector M23

MVP12

4-way, 6-way, 8-way
with plug connector M23



MVP12

4-way, 6-way, 8-way
with front faced plug connector M23



Approvals: 

Contact layout

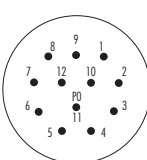
General:

- Contact 1: (+)
Contact 2: (N/C)/(S2)
Contact 3: (–)
Contact 4: (N/O)/(S1)
Contact 5: (PE)

M12 female
4-pole



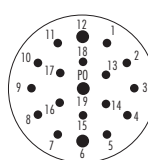
M23 male
12-pole



M12 female
5-pole



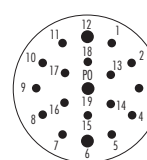
M23 male
19-pole



M12 female
5-pole



M23 male
19-pole



with LED for PNP-signals 24 V DC

Ordering data		Art.-No.	Art.-No.	Art.-No.
Distribution box 4-way		27763	27782	27787
Distribution box 6-way		27764	27783	27786
Distribution box 8-way		27765	27784	27785
Accessories		Art.-No.		
Blind plug for empty sockets		plastic		58627
Snap foot for DIN-rail		with fixing bolts		27905
Label plates		2 strips = 12 pieces, (Murrplastik ABB 17 x 9 type M)		996050
Adapter	M12/M8	connection of M8 male 3-pol. to M12 sockets		7000-42201-0000000
Female connector M23	12-/19-pole	in chapter 1.6.		

Notes

Technical data in chapter 1.3.

Distribution box for universal applications

- with screw-plug terminals for field wiring
- separation contact 5 via pluggable jumpers

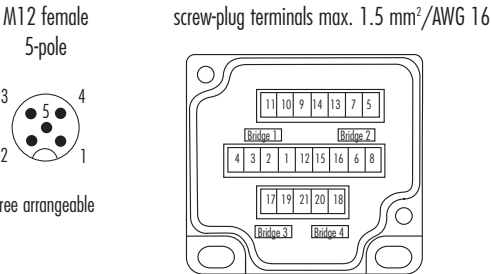
MVP12 UNIVERSAL

4-way
with pluggable connection cap
with contacts individual carried on terminals



Contact layout

General:
Contacts 1:1 carried on terminals

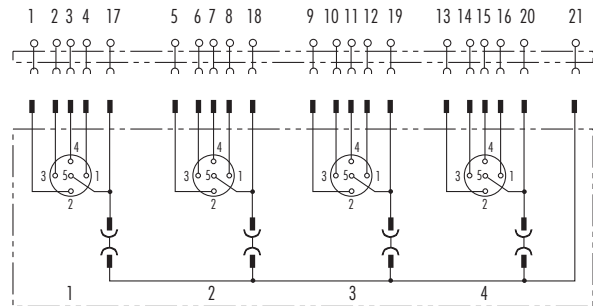


without LED, nominal voltage max. 24 V AC/DC

Ordering data	Art.-No.
Distribution box 4-way	276625

Accessories	Art.-No.
Blind plug for empty sockets	58627
Snap foot for DIN-rail	27905
Label plates	996050
Coding elements for screw-plug terminals	996054

Circuit diagram



Notes
Technical data in chapter 1.3. Other versions on request.

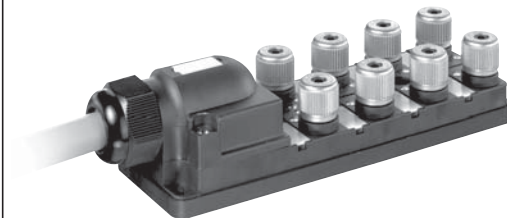
Distribution box for sensors and actuators

Quick connection technology

- includes quick connection units
- with pluggable connection cable or with screw-plug terminals for field-wiring
- potential separation via pluggable jumpers

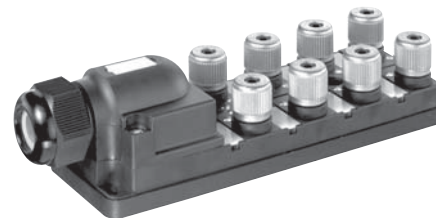
MVP12

4-way, 6-way, 8-way
with pluggable connection cable



MVP12

4-way, 6-way, 8-way
with pluggable connection cap
screw-plug terminals max. 1.5 mm²



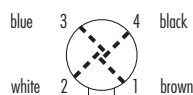
Contact layout

General:

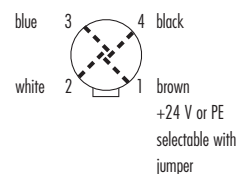
Contact 1: (+)
Contact 2: (S2)/(N/C)
Contact 3: (–)
Contact 4: (S1)/(N/O)

with LED for PNP-signals 24 V DC

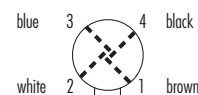
4-pole (2 signals)



4-pole (2 signals)



4-pole (2 signals)



Distribution box 4-way

Art.-No.

Connection cable	cable length
PUR/PVC	3.0 m
8 x 0.34/5 x 0.75 mm ²	5.0 m
	10.0 m
	15.0 m

4927072

4927073

4927074

Distribution box 6-way

Art.-No.

Connection cable	cable length
PUR/PVC	3.0 m
12 x 0.34/5 x 0.75 mm ²	5.0 m
	10.0 m
	15.0 m

4927076

4927077

4927078

Distribution box 8-way

Art.-No.

Connection cable	cable length
PUR/PVC	3.0 m
16 x 0.34/5 x 0.75 mm ²	5.0 m
	10.0 m
	15.0 m

4927082

4927083

4927084

Ordering data

	Art.-No.	Art.-No.
Distribution box 4-way	4927060	4927776
Distribution box 6-way		4927777
Distribution box 8-way	4927061	4927778
Accessories		Art.-No.



Quick connection units (3 parts)	included in the part numbers listed above (see drawing)	4927640
Blind plug for empty sockets	2 pieces included in the part numbers listed above	58468
Tool for coupling nut		58469
Snap foot for DIN-rail	with fixing bolts	27905
Coding elements for screw-plug terminals	for 6 codings	996054

Notes

Other versions on request.