

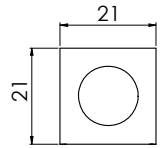
KT

Grommets, small, single



1.1

IP54 IP66 IP68



Product description

Cable grommets KT small are used with the cable entry frames & cable glands of product groups 1.11 & 1.12.

The model range KT small is designed for cable diameters from 1 to 17 mm.

Assembly note

When installing the grommets, the flat side should be facing the middle of the frame. This allows the flat sides of adjacent grommets to match up and provide a secure seal.

| Description | Type | Order No grey | Order No black | Clamping range | PU | |
|-------------|-------|---------------|----------------|----------------|-------|----|
| | BTK | 41251 | 41351 | Blank grommet | 10 | |
| | KT 1 | 39941 | 39943 | 1 - 2 mm | 10 | |
| | KT 2 | 39934 | 41302 | 2 - 3 mm | 10 | |
| | KT 3 | 41203 | 41303 | 3 - 4 mm | 10 | |
| | KT 4 | 41204 | 41304 | 4 - 5 mm | 10 | |
| | KT 5 | 41205 | 41305 | 5 - 6 mm | 10 | |
| | KT 6 | 41206 | 41306 | 6 - 7 mm | 10 | |
| | KT 7 | 41207 | 41307 | 7 - 8 mm | 10 | |
| | KT 8 | 41208 | 41308 | 8 - 9 mm | 10 | |
| | KT 9 | 41209 | 41309 | 9 - 10 mm | 10 | |
| | KT 10 | 41210 | 41310 | 10 - 11 mm | 10 | |
| | KT 11 | 41211 | 41311 | 11 - 12 mm | 10 | |
| | KT 12 | 41212 | 41312 | 12 - 13 mm | 10 | |
| | KT 13 | 41213 | 41313 | 13 - 14 mm | 10 | |
| | KT 14 | 41214 | 41314 | 14 - 15 mm | 10 | |
| | KT 15 | 41215 | 41315 | 15 - 16 mm | 10 | |
| | | KTs 16 | 39901 | 39912 | 16 mm | 10 |
| | | KTs 17 | 39900 | 39913 | 17 mm | 10 |

*Only valid for grey product types

KT

Grommets, small, multi & special grommets



1.1

| Description | Type | Order No grey | Order No black | Clamping range | PU |
|-------------|------------|---------------|----------------|------------------------|-------------|
| | KT 2 1 | 39942 | 39944 | 2x ø 1 mm | 10 |
| | KT 2 2 | 39935 | 39936 | 2x ø 2 mm | 10 |
| | KT 2 3 | 39939 | 39940 | 2x ø 3 mm | 10 |
| | KT 2 4 | 39906 | 39907 | 2x ø 4 mm | 10 |
| | KT 2 5 | 41200 | 39904 | 2x ø 5 mm | 10 |
| | KT 2 6 | 41201 | 39905 | 2x ø 6 mm | 10 |
| | KT 2 7 | 41202 | 39916 | 2x ø 7 mm | 10 |
| | KT 2 8 | 39917 | 39918 | 2x ø 8 mm | 10 |
| | KT 4 2 | 39937 | 39938 | 4x ø 2 mm | 10 |
| | KT 4 3 | 39914 | 39915 | 4x ø 3 mm | 10 |
| | KT 4 4 | 39909 | 39911 | 4x ø 4 mm | 10 |
| | KT 4 5 | 39908 | 39910 | 4x ø 5 mm | 10 |
| | KT 4 6 | 39932 | 39933 | 4x ø 6 mm | 10 |
| | KT ASI | KT-ASI | 39902 | 39903 | 1 ASI-cable |
| | KT-ASI2 rI | 39922 | 39924 | 2 ASI-cables | 10 |
| | KT-ASI2 II | 39921 | 39923 | 2 ASI-cables | 10 |
| | KT oval | 39930 | - | approx. 8 x 4 mm | 10 |
| | KT S1 | 39931 | - | | 10 |
| | KT tele | 39929 | - | Telephone cable | 10 |
| | KT tele1 | 41257 | - | Data cable RJ12 | 10 |
| | KT tele2 | 41258 | - | Data cable RJ10 / RJ45 | 10 |

Specifications KT grey

Material Elastomer
Flame class UL94-Vo, self-extinguishing
IP rating KT round, single: up to IP66/IP68
 KT round, multi: IP54
 KT special, multi: IP54
UL type rating up to UL type 4X (acc. to UL 50E)
Temperature Properties - 40°C to + 100°C (static)
 Halogen-free, silicone-free

Specifications KT black

Material Elastomer
Flame class UL94-HB
IP rating KT round, single: up to IP66/IP68
 KT round, multi: IP54
 KT special, multi: IP54
Temperature Properties - 30°C to + 90°C (static)
 Higher chemical resistance

Accessories

ST Plugs 53

*Only valid for grey product types