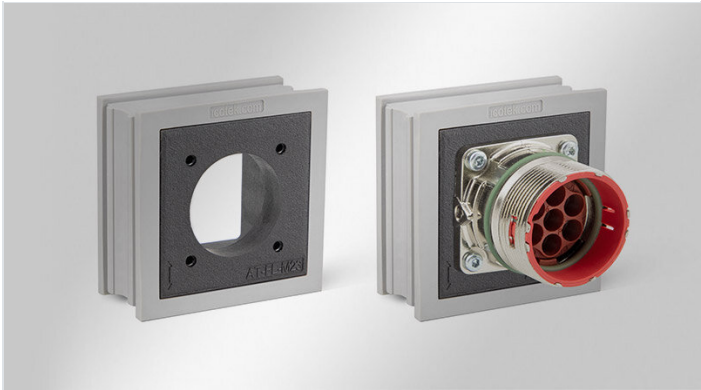


AT-FL adapter grommets

based on KT large, for M23 square flange / IP65



The grommet AT-FL is constructed on the basis of a large KT cable grommet. The polyamide body is moulded with elastomer. All square flanges with dimensions 19.8 x 19.8 mm (M23) can be integrated.

The insertion of AT-FL into an icotek cable entry frame enables the routing of cables with and without connectors in combination with the creation of interfaces for M23 connectors within one cable entry system. Separate cut-outs for connectors are no longer necessary.

AT-FL provides ingress protection of up to IP65 (depending on the used flange and connector).

IP54

REACH COMPLIANCE

HL3
EN 45545-2

IP55

RoHS compliant

UV
ISO 4892-2A

IP64

ECOLAB certified

IP65

PNEUMATICS

Made in Germany

EN ISO 14644

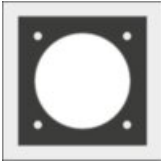
Specifications

IP rating (certified acc. to EN 60529)	IP54, IP55, IP64, IP65
Material	Elastomer Body: Polyamide
Flame class	UL94-V0, self-extinguishing
Operating temperature	40 C° to 90 C°
Properties	silicone free, halogen free

Advantages & benefits

- By utilising the AT-FL grommet, connectors can be integrated directly into the cable entry frame
- Separate cut-outs for connectors are no longer necessary
- Space-saving solution
- Cost-saving assembly

Product types & sizes

AT-FL-M23	Part No.	39965
	EAN	4251269323768
	PU	5
	Length	42 mm
	Width	41.5 mm
	Height	19 mm
	Mounting height	2 mm