

# KEL-FG-A

## Flange enclosures for cable entry



V2A  
anti-corrosive

Also available with stainless steel screws (V2A).



Split KT grommets

## Product description

The cable entry frames KEL-FG-A are suited for installation, sealing and strain relief of cables with connectors and conduits at an angle of 90° to the cabinet, enclosure or machine wall. The KEL-FG-A frame is the same size as a standard 24 pin industrial connector. All frame systems come with a rubber gasket.

## Advantages & benefits

- Installation at an angle of 90° to the wall
- Mechanical protection of cable directly at the place of entry
- Protection against water spray and drips
- Maintain manufacturer's warranty on pre-terminated cables
- Strain relief according to EN 62444
- High stability, vibration resistant

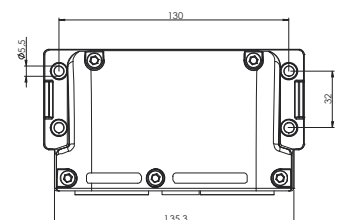
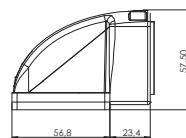
## Specifications

|                    |   |
|--------------------|---|
| Material           | Polyamide (PA)  |
| Flame class        | UL94-Vo, self-extinguishing                                   |
| IP rating          | IP54, with gasket and correct selection of the cable grommets |
| Temperature        | - 40°C to + 140°C (static)                                    |
| Properties         | Halogen-free, silicone-free                                   |
| Cut-out dimensions | 36 × 112 mm, Page 220-221                                     |

## Accessories

|                          |           |
|--------------------------|-----------|
| KT Cable grommets        | 48 - 52   |
| AT Adapter grommets      | 54 - 57   |
| KEL-SNAP Mounting frames | 31        |
| KEL-EMC Cable collectors | 148 - 150 |
| ST Plugs                 | 53        |

| Description | Type                          | Order No. | Grommets<br>small   large | PU |
|-------------|-------------------------------|-----------|---------------------------|----|
|             | KEL-FG-A10                    | 42320     | 10 -                      | 1  |
|             | KEL-FG-A10<br>with V2A screws | 42320.200 | 10 -                      | 1  |
|             | KEL-FG-A7                     | 42322     | 6 1                       | 1  |
|             | KEL-FG-A7<br>with V2A screws  | 42322.200 | 6 1                       | 1  |
|             | KEL-FG-A4                     | 42324     | 2 2                       | 1  |
|             | KEL-FG-A4<br>with V2A screws  | 42324.200 | 2 2                       | 1  |



The cable entry frames enable the integration of the new IMAS-Connect™ adapter grommets.

## KEL-FG-B

### Flange enclosures for cable entry



Also available with threaded bushings.



Also available with stainless steel screws (V2A).



Split KT grommets

Configure  
online  
now



1.11

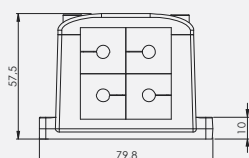
Description

Type

Order No.

Grommets  
small | large

PU



KEL-FG-B4

42330

4|-

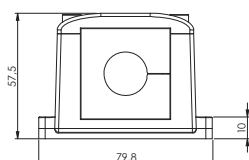
1

KEL-FG-B4  
with V2A screws

42330.200

4|-

1



KEL-FG-B1

42332

-1|

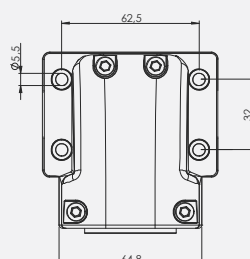
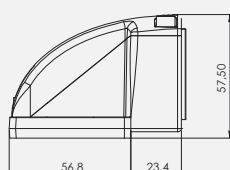
1

KEL-FG-B1  
with V2A screws

42332.200

-1|

1



## Product description

The cable entry frames KEL-FG-B are suited for installation, sealing and strain relief of cables with connectors and conduits at an angle of 90° to the cabinet, enclosure or machine wall. All frame systems come with a rubber gasket.

## Advantages & benefits

- Installation at an angle of 90° to the wall
- Mechanical protection of cable directly at the place of entry
- Protection against water spray and drips
- Maintain manufacturer's warranty on pre-terminated cables
- Space saving shape
- Strain relief according to EN 62444
- High stability, vibration resistant

## Specifications

|                    |   |
|--------------------|---|
| Material           | Polyamide (PA)  |
| Flame class        | UL94-Vo, self-extinguishing                                   |
| IP rating          | IP54, with gasket and correct selection of the cable grommets |
| Temperature        | - 40°C to + 140°C (static)                                    |
| Properties         | Halogen-free, silicone-free                                   |
| Cut-out dimensions | 46 × 36 mm, Page 220-221                                      |

## Accessories

|                          |           |
|--------------------------|-----------|
| KT Cable grommets        | 48 - 52   |
| AT Adapter grommets      | 54 - 57   |
| KEL-EMC Cable collectors | 148 - 150 |
| ST Plugs                 | 53        |

# KEL-FG-E

## Flange enclosures for cable entry

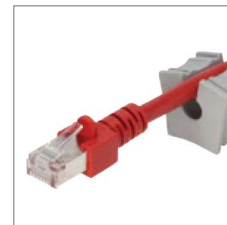
Configure  
online  
now



Also available with threaded bushings.



Also available with stainless steel screws (V2A).



Split KT grommets

## Product description

The cable entry frames KEL-FG-E are suited for installation, sealing and strain relief of cables with connectors and conduits at an angle of 90° to the cabinet, enclosure or machine wall.

The KEL-FG-E version is particularly suited for flat connectors. The small frame is ideal for applications with limited space. All frame systems come with a rubber gasket.

## Advantages & benefits

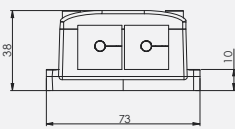
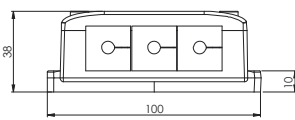
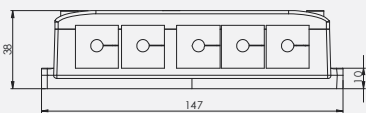
- Installation at an angle of 90° to the wall
- Mechanical protection of cable directly at the place of entry
- Protection against water spray and drips
- Maintain manufacturer's warranty on pre-terminated cables
- Space saving shape
- Optimal for D-Sub connectors
- Strain relief according to EN 62444
- High stability, vibration resistant

## Specifications

|                    |   |
|--------------------|---|
| Material           | Polyamide (PA)  |
| Flame class        | UL94-Vo, self-extinguishing                                   |
| IP rating          | IP54, with gasket and correct selection of the cable grommets |
| Temperature        | - 40°C to + 140°C (static)                                    |
| Properties         | Halogen-free, silicone-free                                   |
| Cut-out dimensions | E2: 43 × 24 mm<br>E3: 65 × 24 mm<br>E5: 112 × 24 mm           |

## Accessories

|                          |           |
|--------------------------|-----------|
| KT Cable grommets        | 48 - 52   |
| KEL-EMC Cable collectors | 148 - 150 |
| ST Plugs                 | 53        |

| Description  | Type                         | Order No. | Grommets<br>small   large | PU |
|--|------------------------------|-----------|---------------------------|----|
|    | KEL-FG-E2                    | 42333     | 2 -                       | 5  |
|  | KEL-FG-E2<br>with V2A screws | 42333.200 | 2 -                       | 5  |
|  | KEL-FG-E3                    | 42334     | 3 -                       | 5  |
|  | KEL-FG-E3<br>with V2A screws | 42334.200 | 3 -                       | 5  |
|  | KEL-FG-E5                    | 42336     | 5 -                       | 5  |
|  | KEL-FG-E5<br>with V2A screws | 42336.200 | 5 -                       | 5  |

